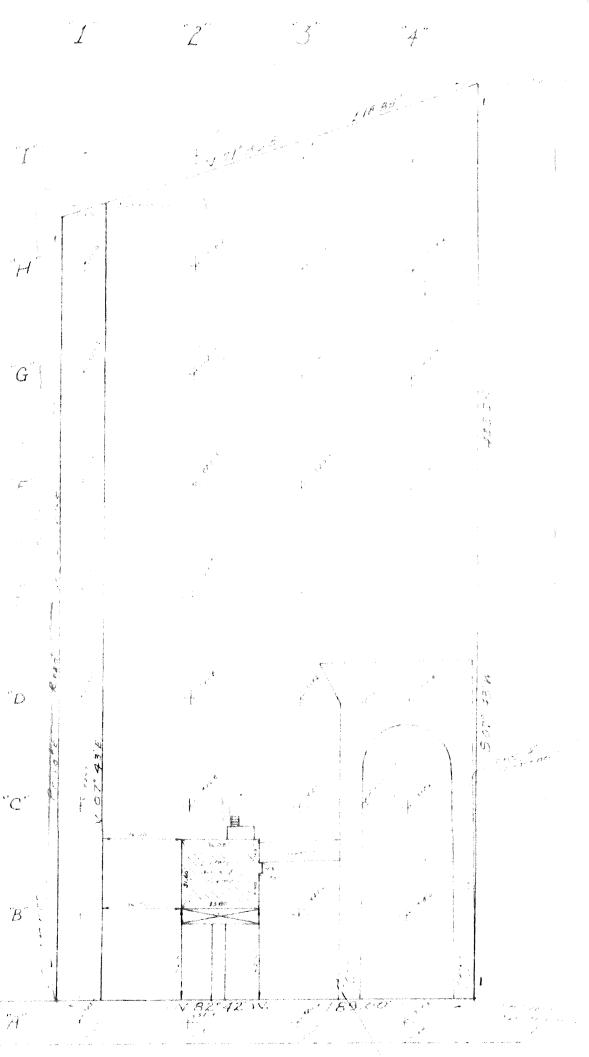


A TRACT OF LAND BEING PART
OF LOT 5 OF SUBD OF ESTATE OF
JOHN F. LITZSINGER IN U.S SURVEY
1947, T. 45N. - R. 6E. ST. LOUIS COUNTY, MO.



Scale: 1" = 30'

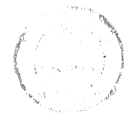
Plat for the Survey of the
40' Wide Road
in the Subdivision of

This is to certify that we have during the month of June,
1939, by order of John Kauter, Clerk of the Court, and
before of the Survey of a part of said being part of
Lot 5 of the Survey of the Estate of John F. Litzsinger,
1947, T. 45N. - R. 6E. St. Louis County, Missouri,
made a survey of the same and have thereunto
this day annexed a true and correct plat.

Witness my hand and seal at St. Louis, Mo.
this 15th day of June 1939.

John F. Litzsinger
John F. Litzsinger
John F. Litzsinger
John F. Litzsinger

Official Seal of the Surveyor



Litzsinger Road 40' wide