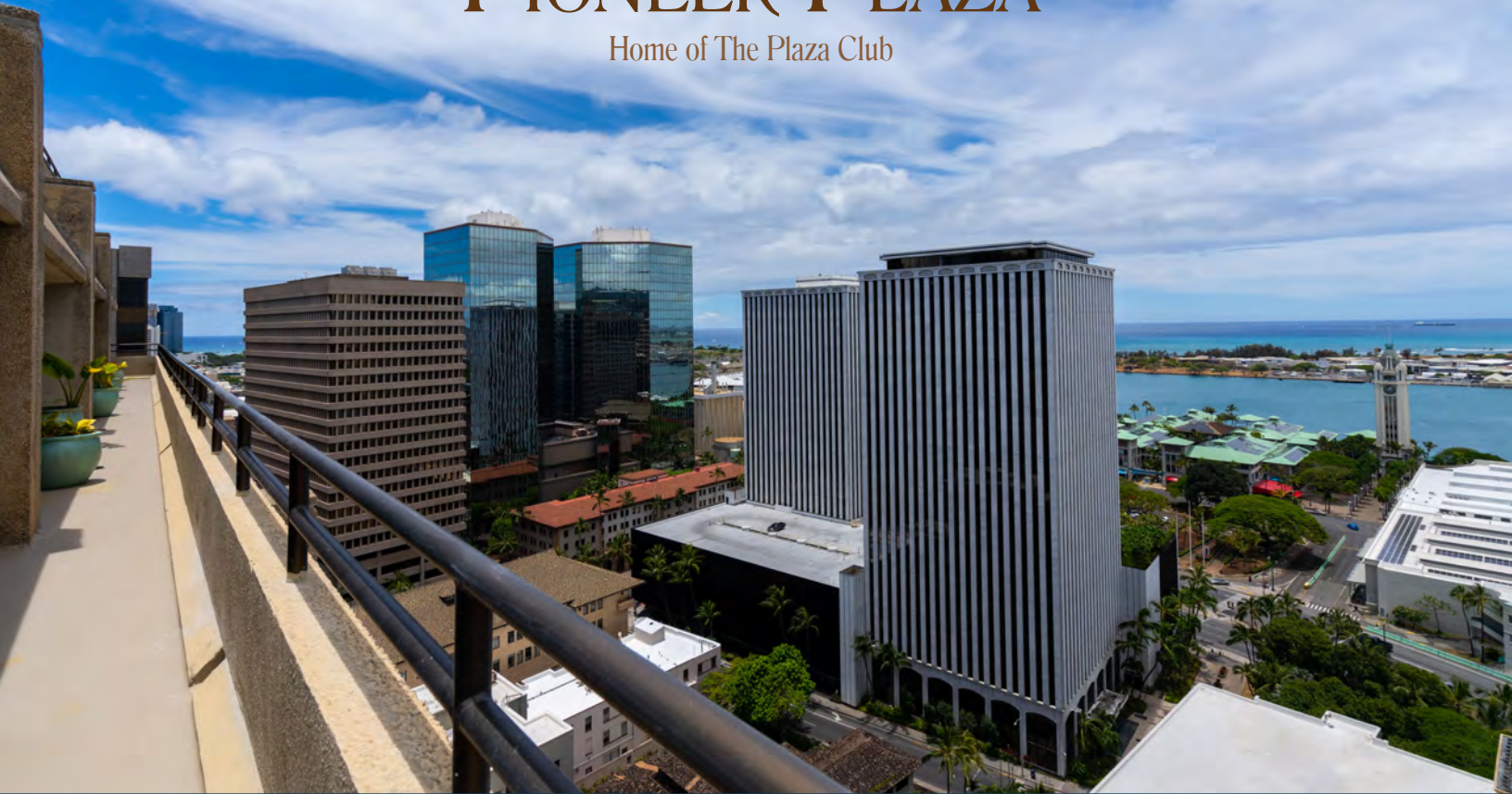


PIONEER PLAZA

Home of The Plaza Club



Suite 1900

Total SF	13,360
Available	Q4 2019
Base Rent	Negotiable
CAM	\$1.45/SF

Suite Features

- Full Floor Suite
- Beautiful Ocean/Mountain/City Views
- Upgraded Restrooms
- 16 Offices
- 3 Workstation/Collaborative Rooms
- 30 Workstations (spaces for)
- 4 Conference Rooms
- Reception Area & Waiting Room
- Kitchen/Breakroom
- Storage Room
- IT Room

Executive Summary

MW Commercial Realty, Inc. is pleased to present the opportunity to lease Suite 1900 at Pioneer Plaza. The highest leasable floor in the office tower offers sweeping ocean views and a window line that wraps the entire floor providing 360 degree views. Suite 1900 boasts newly updated and well appointed reception area, lobby and dedicated restrooms. The suite is efficiently laid out for optimal productivity while maintaining comfortable and open work spaces.

Pioneer Plaza is conveniently located and easily accessible. The open air lobby provides a waterfall setting with ample seating, complimentary WiFi and a bustling food court that makes for a warm and welcoming experience. The Plaza Club, Pioneer Plaza's crown jewel and private members only club sits atop the building on the 20th and 21st floors offering premier banquet and dining accommodations.

Pioneer Plaza's onsite property management team is highly responsive, experienced and friendly to work with. Along with recently modernized elevators, the 24 hour onsite security personnel and access control systems provide tenants the highest level of security, safety and refinement.



MW Commercial Realty, Inc.

Real Estate Brokerage

RB-16265

CONTACT:

Justin J. Hopkins (B), CCIM

Vice President | Investment Sales & Leasing | RB-22198

D: (808) 275-5330 | E: jhopkins@mwcommercialrealty.com

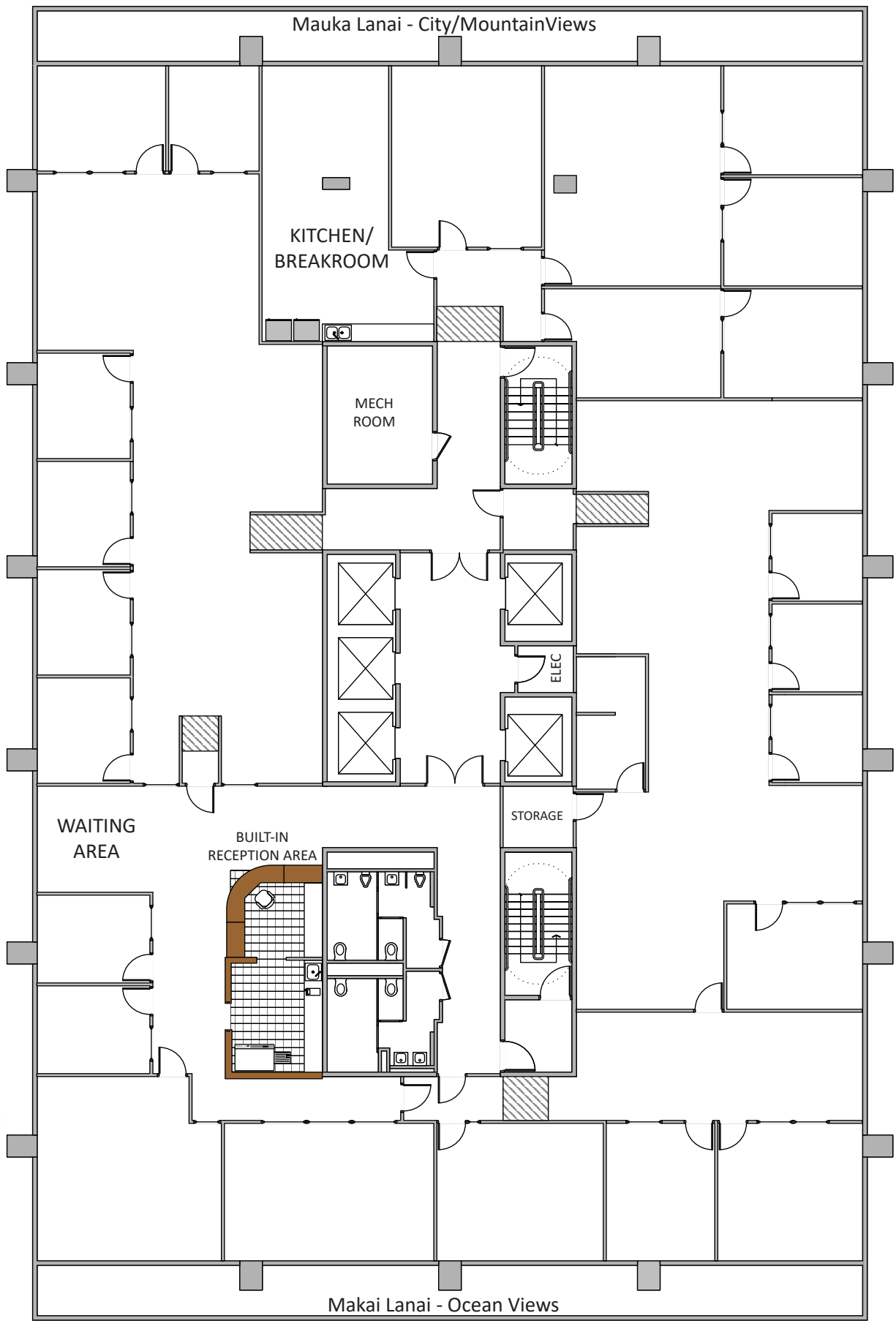
PIONEER PLAZA

Home of The Plaza Club



MW Commercial Realty, Inc.
Real Estate Brokerage

RB-16265



MW Commercial Realty, Inc.
Real Estate Brokerage

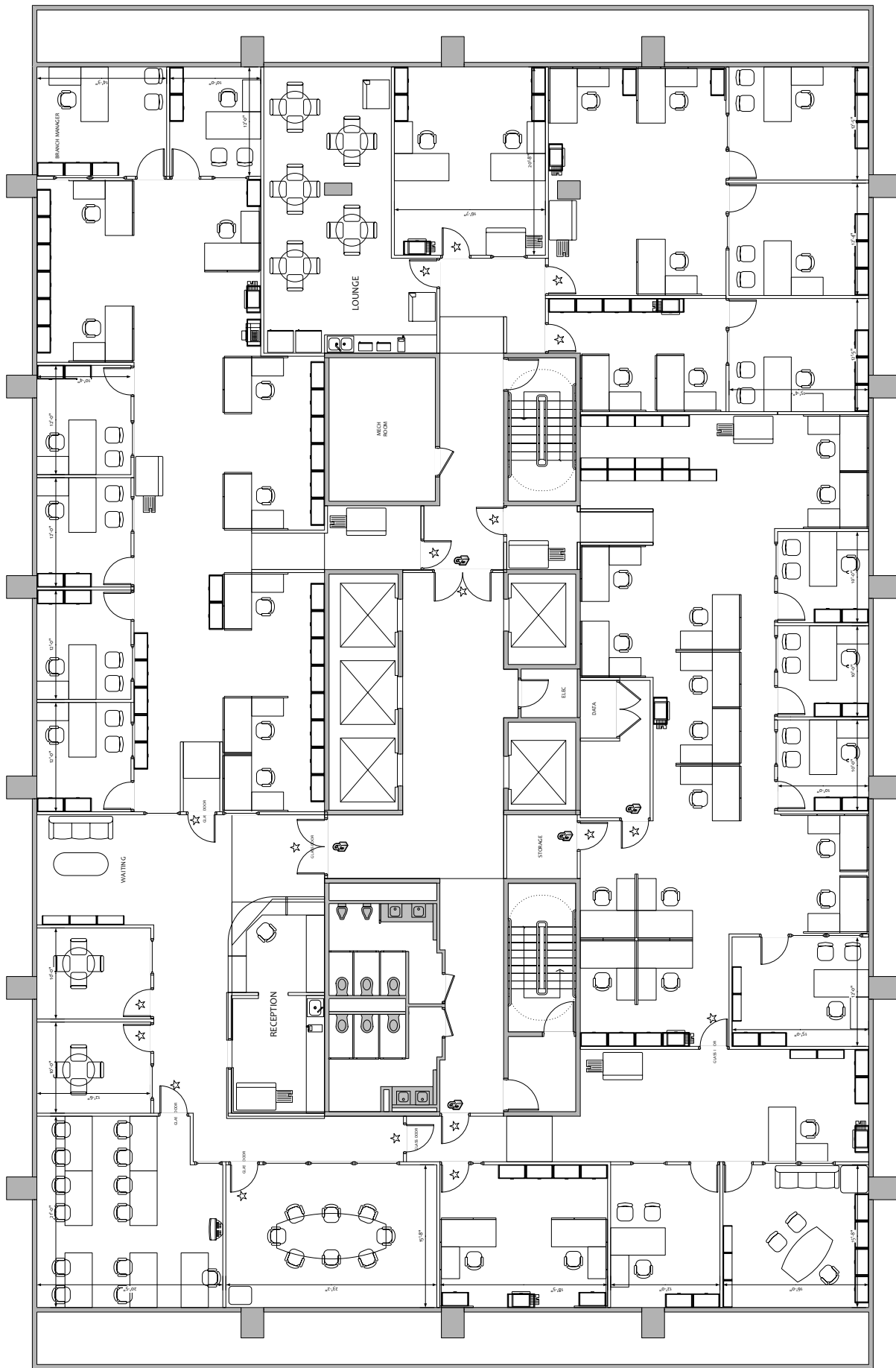
RB-16265

CONTACT:

Justin J. Hopkins (B), CCIM

Vice President | Investment Sales & Leasing | RB-22198

D: (808) 275-5330 | E: jhopkins@mwcommercialrealty.com



OCEAN SIDE

EXISTING FURNITURE LAYOUT IS FOR ILLUSTRATION PURPOSES ONLY. FURNISHINGS NOT INCLUDED.



MW Commercial Realty, Inc.
Real Estate Brokerage

RB-16265

CONTACT:
Justin J. Hopkins (B), CCIM
Vice President | Investment Sales & Leasing | RB-22198
D: (808) 275-5330 | E: jhopkins@mwcommercialrealty.com