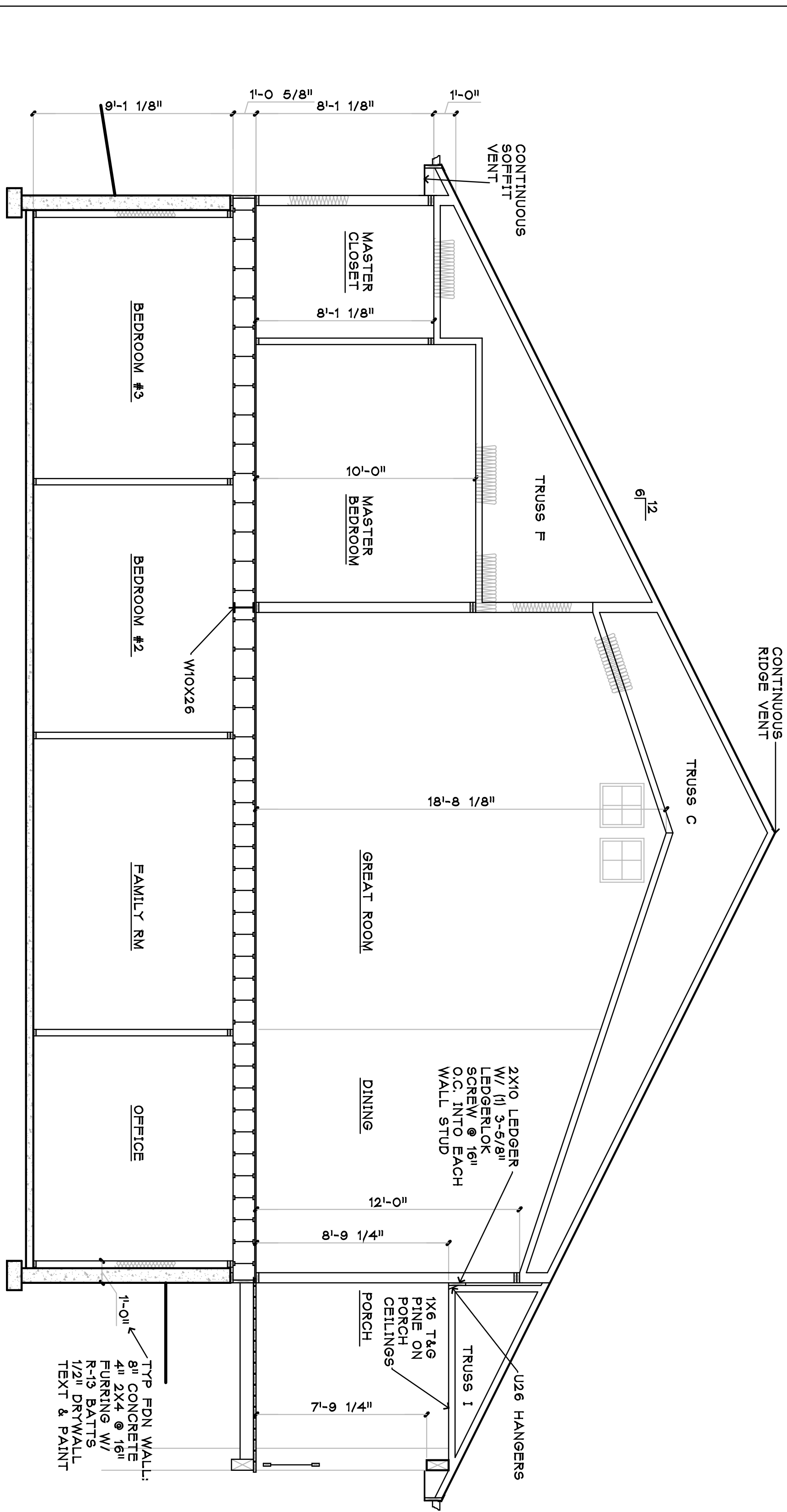


BUILDING SECTION

SCALE 1/4" = 1'-0"

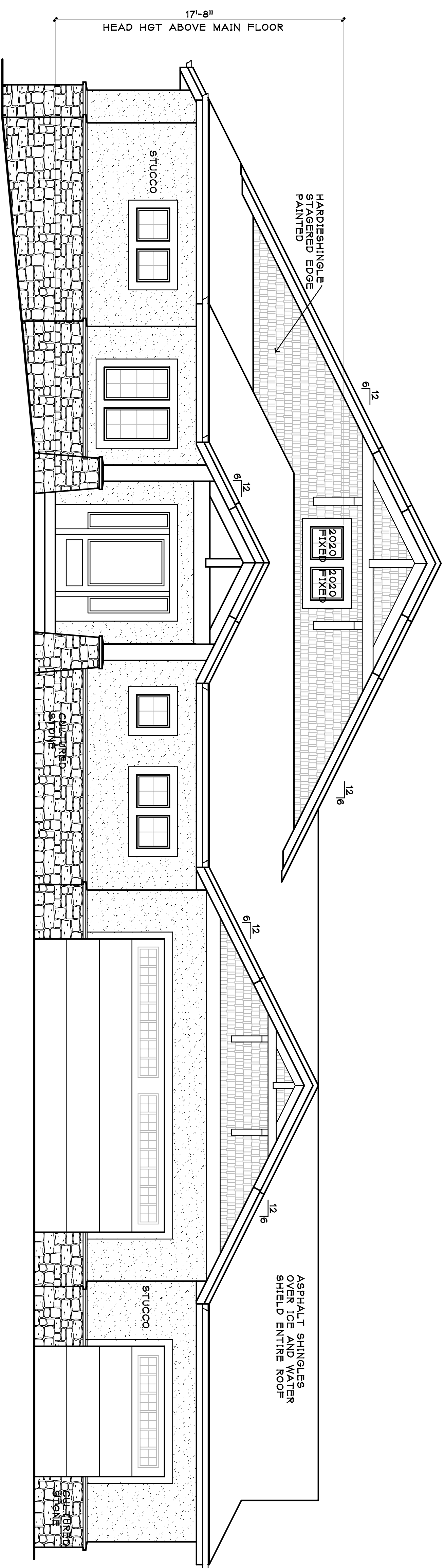
1 BUILDING SECTION THRU GARAGE
SCALE 1/4" = 1'-0"



BUILDING SECTION

SCALE 1/4" = 1'-0"

2 BUILDING SECTION
SCALE 1/4" = 1'-0"



WEST ELEVATION

SCALE 1/4" = 1'-0"

3 WEST ELEVATION
SCALE 1/4" = 1'-0"