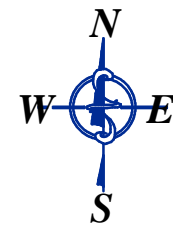




# Kootenai County, Idaho

MapTile Location within Township

6	5	4	3	2	1
7	8	9	10	11	12
18	17	16	15	14	13
19	20	21	22	23	24
30	29	28	27	26	25
31	32	33	34	35	36



THIS DRAWING IS TO BE USED FOR REFERENCE PURPOSES ONLY. THE COUNTY IS NOT RESPONSIBLE FOR ANY INACCURACIES CONTAINED HEREIN.

### Map Revisions

- 03/05/10 - VMW  
0-3500-000-133-A redescribed as Tax#22618 (10)
- 08/10/10 - VMW  
0-3500-000-086-B combined w/ 087-0 (now -A) (11)
- 03/06/13 - ET  
0-3500-000-092-A acreage & riparian correction (13)
- 11/19/13 - VMW  
0-3500-000-132-C out of 133-A (now -0) (14)
- 01/30/15 - JCJ  
0-3500-000-039-0 and 0-3500-000-040-A out of 038-A (now -0) (15)
- 08/13/20 - GP  
0-3500-000-078-0 out of 077-A (now -0) (21)

### Notes:

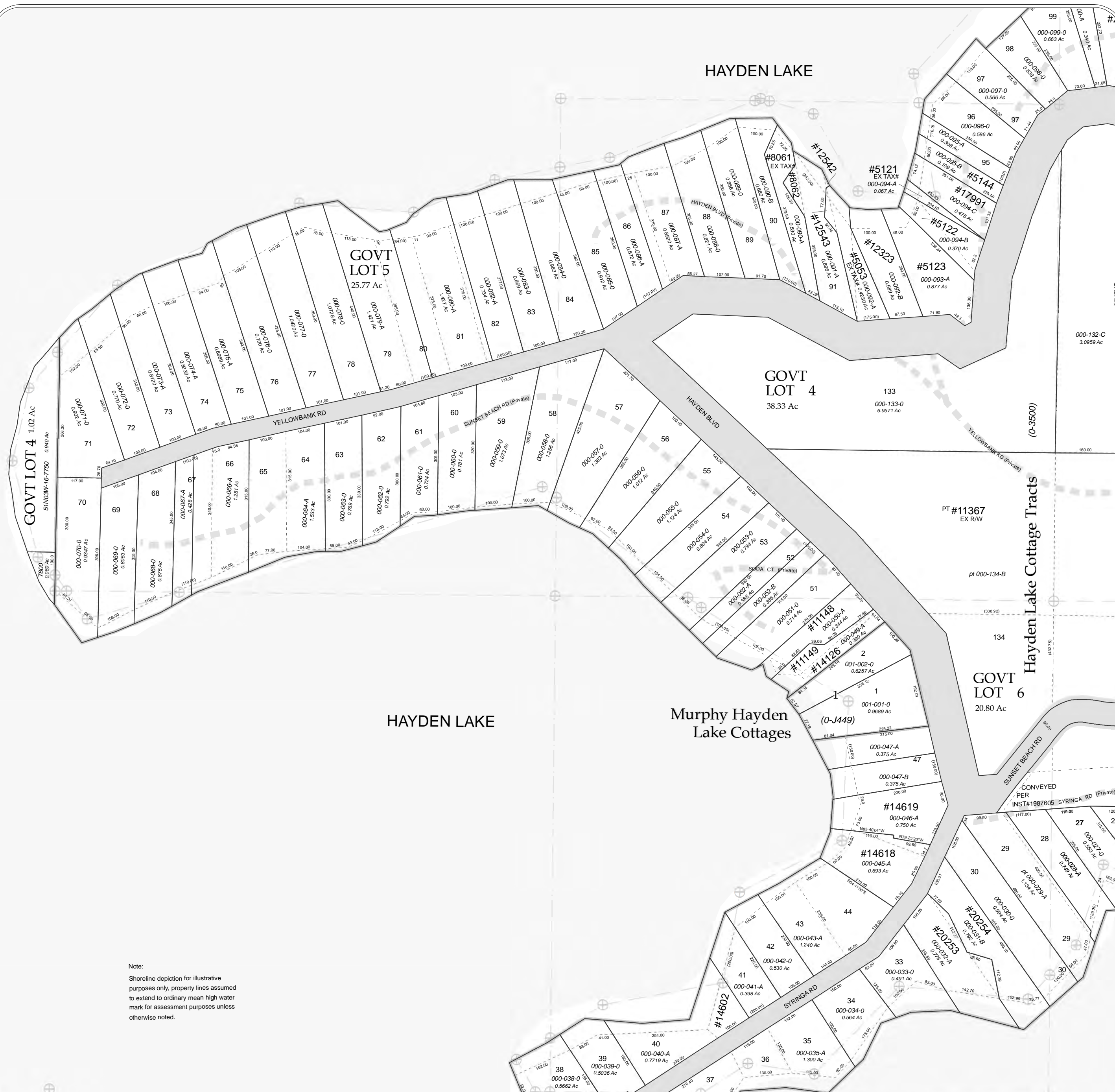
Parcel areas have been calculated by traverse closure when sufficient information has been available. Area shown is Net Assessable Area; Right-of-Way, where applicable, has been subtracted. Distances and curve lengths less than 50' may not be shown due to scale limitations. Dimensions in parenthesis denote record and/or platted lot dimensions.

LOCATION OF ROADS SHOWN ARE BASED ON ADDRESSABLE ROAD INFORMATION AND MAY OR MAY NOT BE PUBLIC.

Parcel Identification Number (PIN) are comprised as follows:  
Platted: Sub-code and Parcel ID# ex. C-3510 and 021-999-C Resulting PIN = C-3510-021-999-C or C3510021999C  
Unplatted: TwpRngSec and Parcel ID# ex. 50N03W-16 and 7950 Resulting PIN = 50N03W-16-7950 or 50N03W167950

### Legend

- (C-5357) Sub-code
- 001-001-A Parcel ID# (PIN)
- TaxParcels
- LegalAreas
- Road RW
- Private Roads
- Plat Boundaries
- Railroad
- City Limits
- GCDB\_Corners
- GCDB\_Lines



Note:  
Shoreline depiction for illustrative purposes only, property lines assumed to extend to ordinary mean high water mark for assessment purposes unless otherwise noted.

