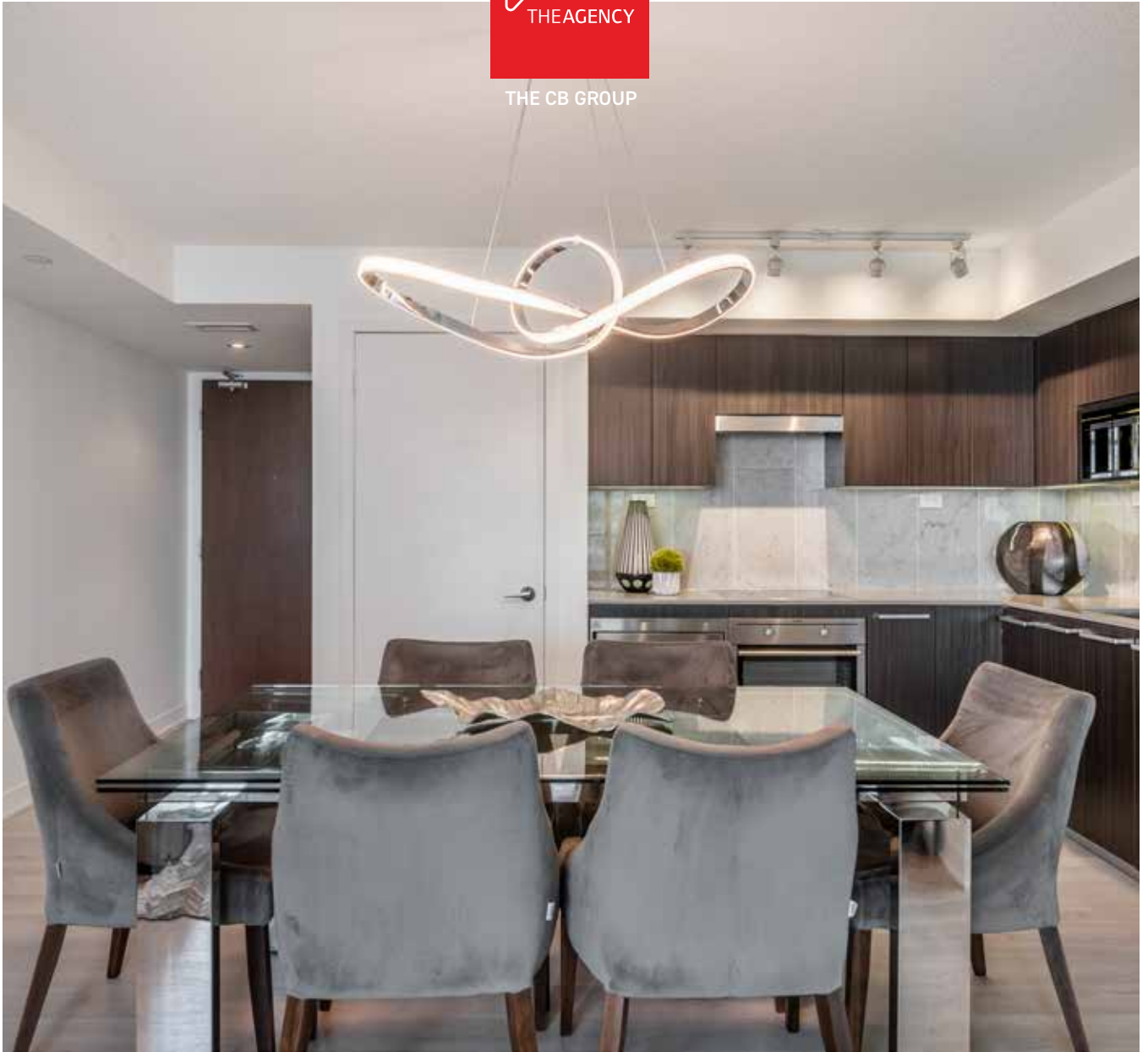




THE CB GROUP



1812-70 QUEENS WHARF ROAD

TORONTO



Luxurious Downtown Toronto Apartment

Live in one of the most Luxurious Buildings at Downtown Toronto's Concord Cityplace. This Southeast facing 3 Bedroom & 2 bath suite offers unsurpassed Panoramic City & Lake Views with its floor to ceiling windows. Elegant and Tasteful finishes include marble tiled bathrooms, & modern open concept kitchen with integrated fridge, freezer, & dishwasher. The Spacious Living & Dining area is perfect for entertaining & offers upgraded designer lighting & access to the 65 Sf Balcony. The 1038 SF suite also comes with 2 premium parking spots & 1 locker. This beautifully designed building offers tons of luxury amenities including concierge, security, indoor pool, gym, theatre room, guest suites, art & yoga studios, party lounge with kitchen, children's playroom, underground parking & much more. Incredible location steps to the New Loblaws 50,000 Sf Flagship Store, LCBO, restaurants, shopping, Stackt Market, the TTC, Gardiner Expressway & walking distance to the Toronto Island Airport, CNE, CN tower & more. This condo has everything downtown living has to offer!

3 BEDS | 2 BATHS | 1,038 SQ.FT | 2 PARKING | 1 LOCKER











FLOOR PLANS



Suite area: 1,038 s.f. | Balcony Area: 65 s.f. | Total Area: 1,103 s.f.

DETAILS

Unit Features

- Choice of 3 interior colour schemes
- Laminate flooring throughout the main living area, bedroom(s) and den
- Roller-shade window coverings

Kitchen Features

- Carrara marble backsplash
- Composite quartz countertop
- Thermofoil cabinetry with open display shelving
- Under-cabinet lighting
- Premium soft-close hardware
- Waste recycling bin & sliding basket under kitchen sink
- Under-mount stainless steel sink
- Premium polished chrome faucet with pull-down spray
- Premium appliance package including:
 - Integrated refrigerator
 - Stainless steel electric cooktop
 - Stainless steel integrated oven
 - Stainless steel hood fan
 - Integrated dishwasher
 - Stainless steel microwave oven with trim

Bathroom Features

- Polished carrara marble wall tile
- Honed carrara marble floor tile
- Thermofoil cabinetry with internal drawers
- Premium soft-close hardware
- Composite quartz countertop
- Under-mount sink
- Custom medicine cabinet with mirror, shelves and built in lighting

- Premium polished chrome faucet, tub spout and shower head
- Premium dual-flush toilet

Laundry Features

- High-capacity front-load washer
- High-capacity front-load dryer

Extras

- All stainless steel kitchen appliances, washer and dryer, all window coverings, all electrical light fixtures tv bracket

Exclusions

- TV
- Artwork
- Mirrors

Fwd condominiums concord cityplace
Built may 2018

Amenities

- Amenity plan
- Photo studio
- Art studio
- Music studio
- Dance studio
- Children's playroom
- Prisma club - pool
- Prisma club - level 1
- Prisma club - level 2
- Prisma club - level 3

AMENITIES





THE CB GROUP



CARLOS CLAVERO
Managing Director Of Luxury Estates
& Sales Representative



CHRISTINA CLAVERO
Managing Director &
Sales Representative



DAVID BAKOWSKY
Managing Director &
Sales Representative



LEJLA MASOVIC
Sales
Representative

THE CB GROUP
CBGROUP@THEAGENCYRE.COM
647.797.1027



CBGROUPREALTY.COM
THE AGENCY OAKVILLE | 136 CHURCH STREET, OAKVILLE, ON, L6J1M9

EACH OFFICE INDEPENDENTLY OWNED AND OPERATED.