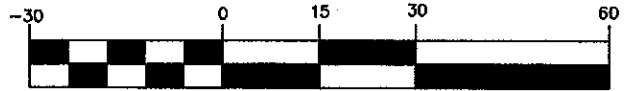


THE VILLAS AT MEADOWBROOK

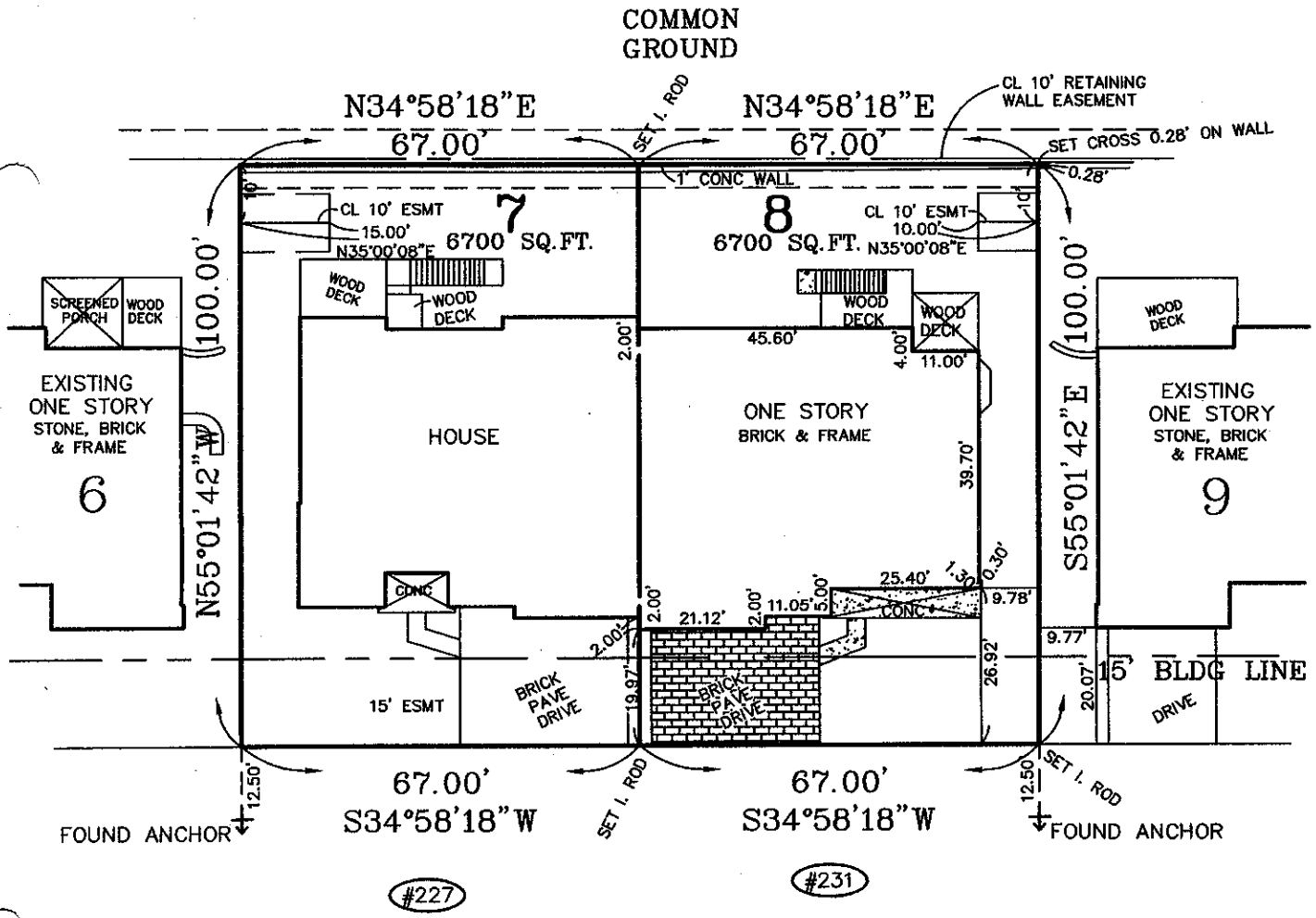
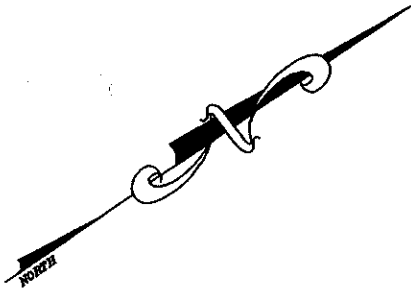
TRACT OF LAND IN U.S. SURVEY 1890 & SECTIONS 22 & 27,
TOWNSHIP 45 NORTH, RANGE 4 EAST,
CITY OF BALLWIN, ST. LOUIS COUNTY, MISSOURI
(P.B. 353, PGS. 424-426)

NOTE: All easements shown per Record Plat.
No title binder was provided at time of drawing.

GRAPHIC SCALE



(IN FEET)
1 inch = 30 ft.

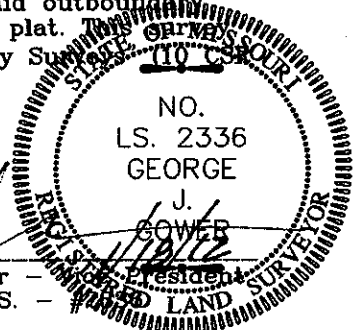


MEADOWBROOK COUNTRY CLUB ESTATES (50'W)

ORDER NUMBER: 12-01-0014

THE STERLING COMPANY
5055 NEW BAUMGARTNER ROAD
ST. LOUIS, MISSOURI 63129

This is to certify that we have on January 16, 2012, by order of Investors Title Company, made an outboundary survey and located the improvements on "Lot 8 of THE VILLAS AT MEADOWBROOK", and that the results of said outboundary survey and location of improvements are represented on this plat. This plat meets the "Missouri Minimum Standards for Property Boundary Surveys" (10 CSR 30-2 and 20 CSR 2030-16 effective date August 28, 2006.)



By *George J. Gower*
George J. Gower - President
MO Reg. L.S. -

P.P. FDN. FNL.

DRAWN	S.S.	J.M.
CHECKED		