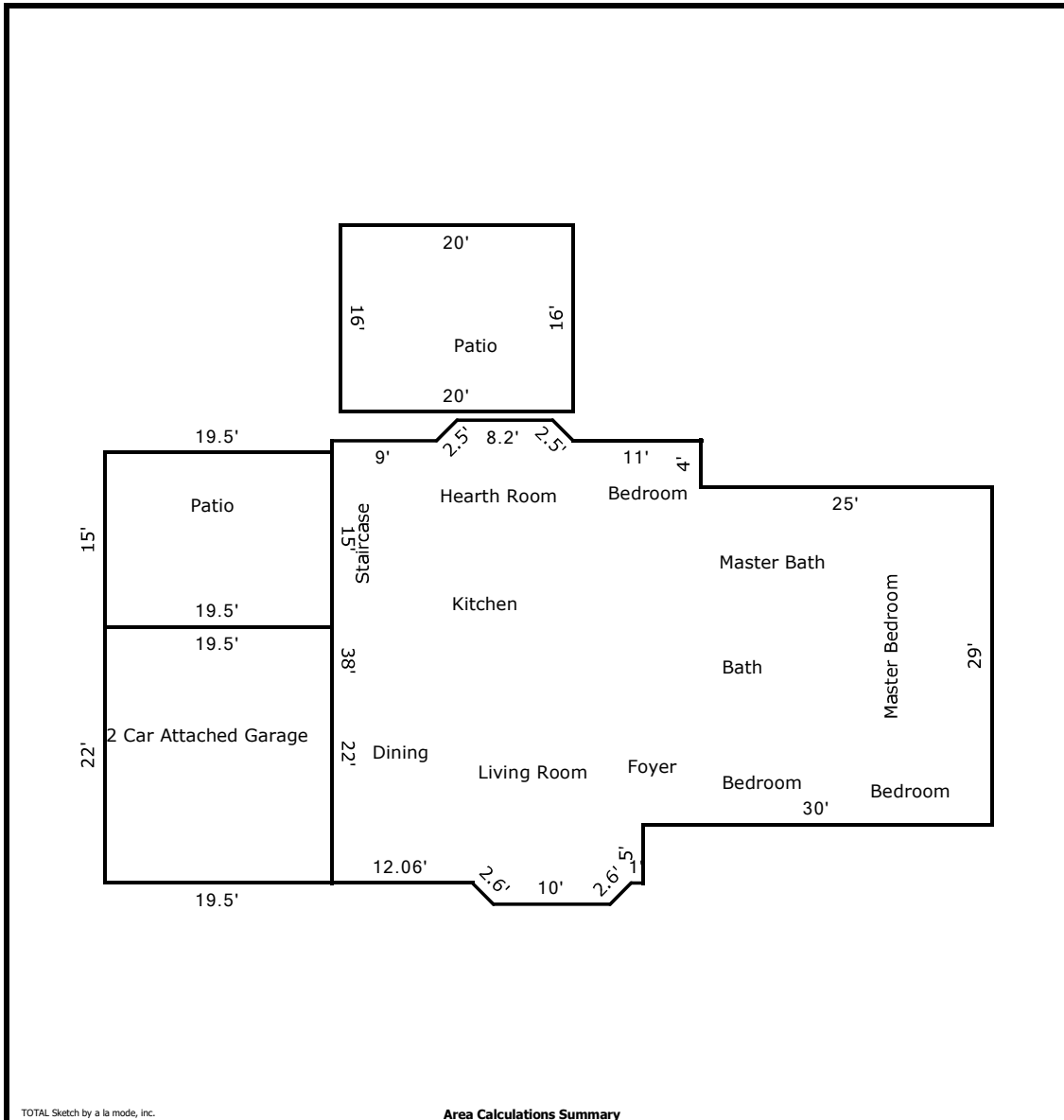
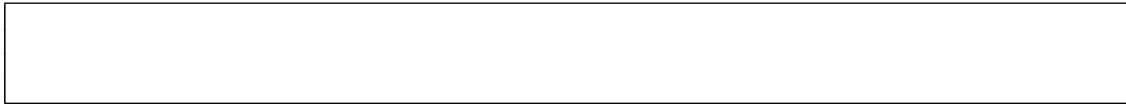


Building Sketch



TOTAL Sketch by a la mode, inc.

Area Calculations Summary

Living Area		Calculation Details	
First Floor	1945.34 Sq ft	$0.5 \times 1.84 \times 1.84 =$	1.69
		$0.5 \times 1.84 \times 1.84 =$	1.69
		$10 \times 1.84 =$	18.39
		$0.5 \times 1.77 \times 1.77 =$	1.56
		$0.5 \times 1.77 \times 1.77 =$	1.56
		$8.2 \times 1.77 =$	14.5
		$29 \times 25 =$	725
		$31.74 \times 33 =$	1047.27
		$5 \times 26.74 =$	133.68
Total Living Area (Rounded):	1945 Sq ft		
Non-living Area			
2 Car Attached	429 Sq ft	$22 \times 19.5 =$	429
Concrete Patio	320 Sq ft	$20 \times 16 =$	320
Concrete Patio	292.5 Sq ft	$19.5 \times 15 =$	292.5