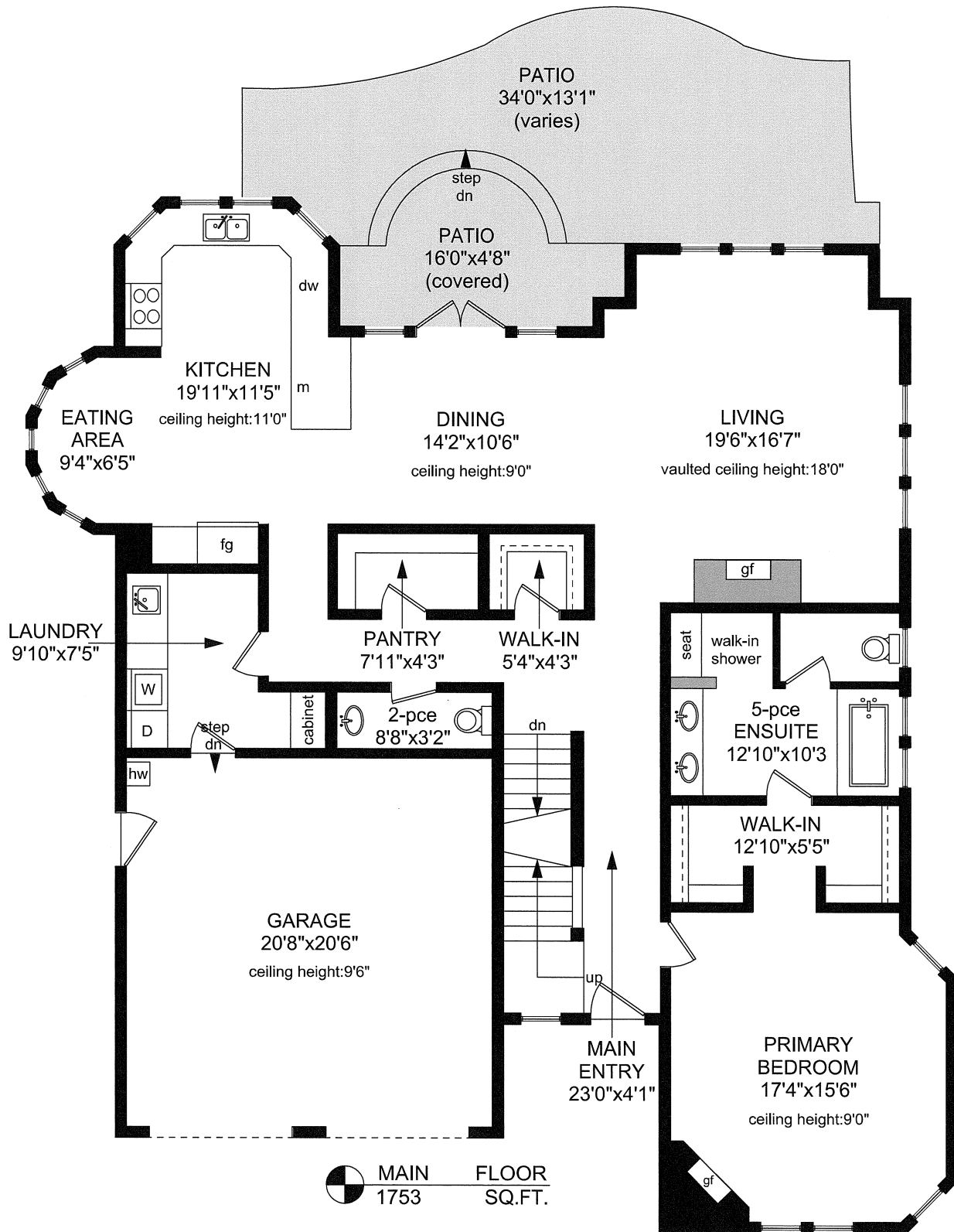



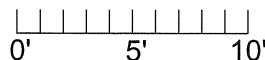
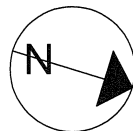
2212 ISLAND FALLS PLACE



 MAIN FLOOR
 1753 SQ.FT.


NOTE: The room name labels/sizes are for viewing reference only. They are not to be used for calculating total square footage.

	FINISHED SQ. FT.	UNFINISHED SQ. FT.	TOTAL SQ. FT.
MAIN	1753	0	1753
UPPER	947	0	947
LOWER	928	815	1743
TOTAL	3628	815	4443
GARAGE	0	447	447
PATIO	0	421	421
BALCONY	0	42	42

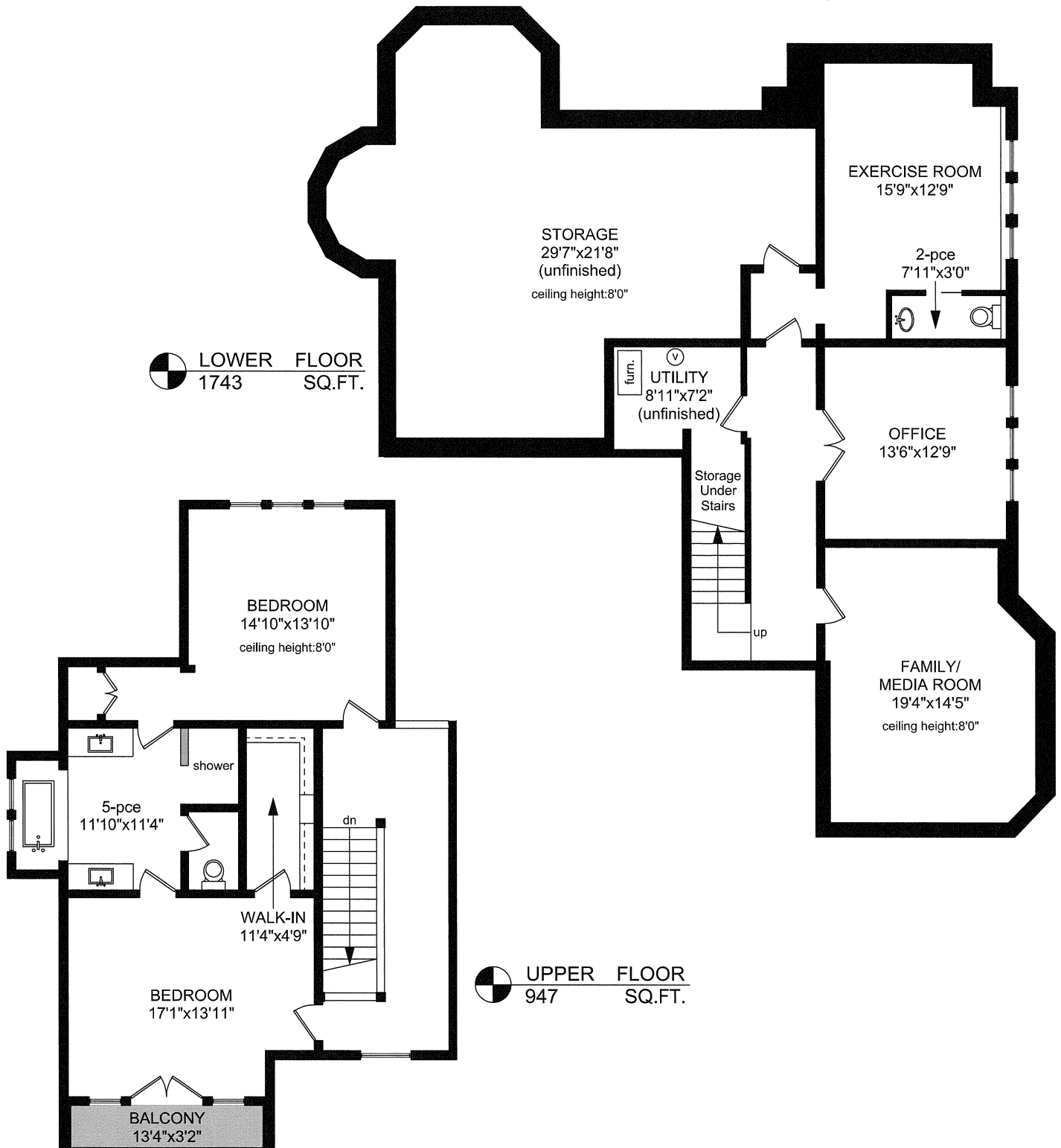


PREPARED FOR THE EXCLUSIVE USE OF
 NIELS MADSEN & DAVID LANGLOIS,
 PERSONAL REAL ESTATE CORPORATION,
 MACDONALD REALTY Ltd.

MEASURED ON: 07/05/21
 DRAWING FILE: 18009

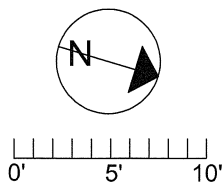
 VICTORIA, B.C.
 Measure Ph. 883.8894
 www.tafemeasure.com

2212 ISLAND FALLS PLACE



NOTE: The room name labels/sizes are for viewing reference only.
They are not to be used for calculating total square footage.

	FINISHED SQ. FT.	UNFINISHED SQ. FT.	TOTAL SQ. FT.
MAIN	1753	0	1753
UPPER	947	0	947
LOWER	928	815	1743
TOTAL	3628	815	4443
GARAGE	0	447	447
PATIO	0	421	421
BALCONY	0	42	42



PREPARED FOR THE EXCLUSIVE USE OF
 NIELS MADSEN & DAVID LANGLOIS,
 PERSONAL REAL ESTATE CORPORATION,
 MACDONALD REALTY Ltd.

MEASURED ON: 07/05/21
 DRAWING FILE: 18009

Taf VICTORIA, B.C.
M Measure Ph. 883.8894
 www.tafemeasure.com