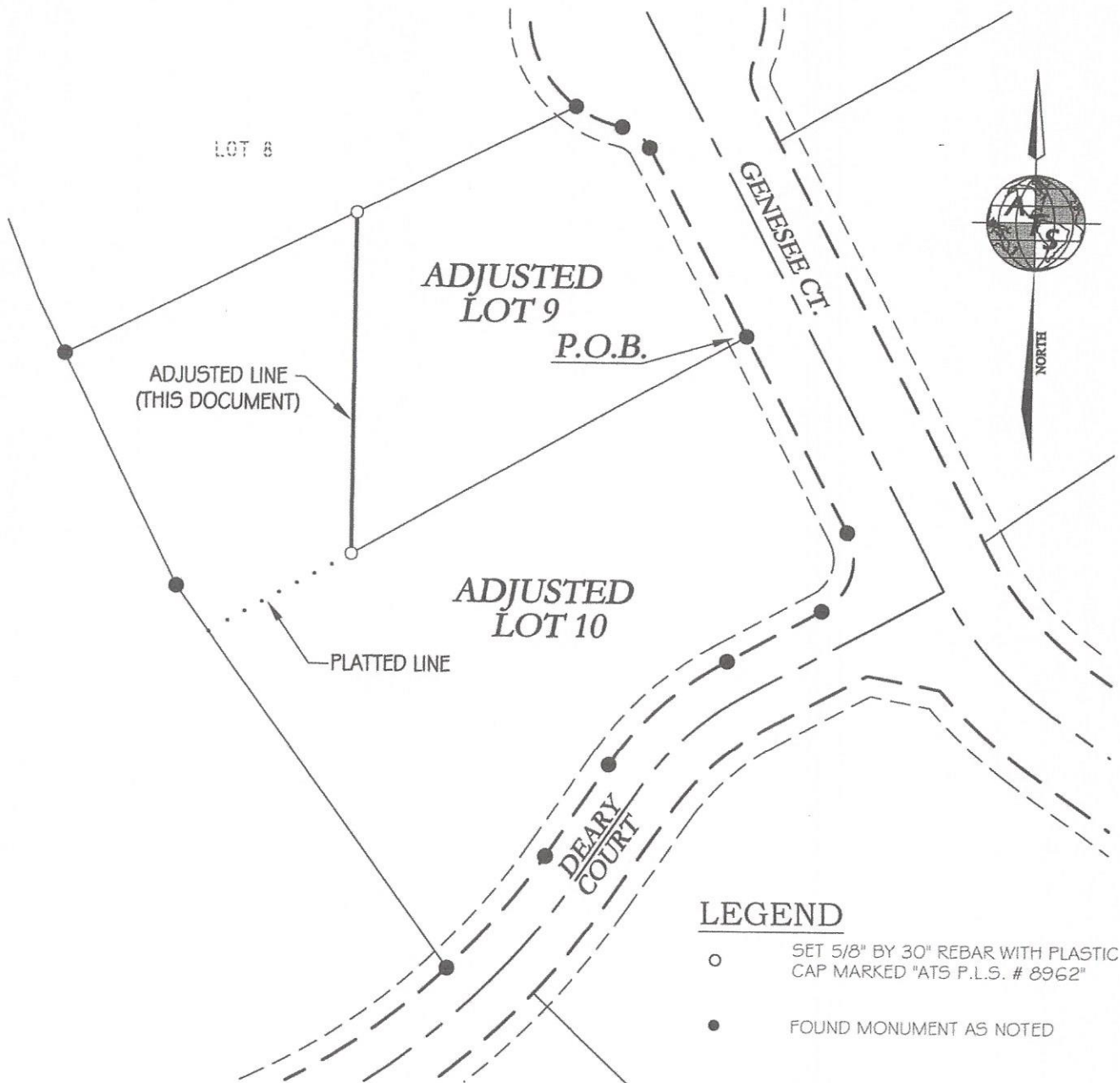


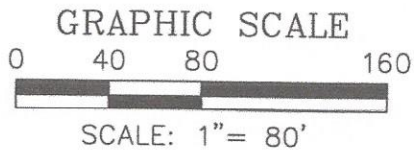
EXHIBIT C

BOUNDARY LINE ADJUSTMENT
LOT 9 & LOT 10, BLOCK 1, RIVERVIEW HEIGHTS, CDS
SECTION 11, TOWNSHIP 50 NORTH, RANGE 05 WEST, B.M.
KOOTENAI COUNTY, IDAHO



LEGEND

- SET 5/8" BY 30" REBAR WITH PLASTIC CAP MARKED "ATS P.L.S. # 8962"
- FOUND MONUMENT AS NOTED



	ADVANCED TECHNOLOGY SURVEYING & ENGINEERING INC.	SCALE: 1" = 80'
	9177 HESS STREET, HAYDEN IDAHO, 83835	CHECKED BY: MM
	PH. (208)-772-2745 • FAX (208)-762-7731 •	DATE: 03/01-2021
		CHECKED BY: MBM
	DATE: 03/01/2021	DWG: HARDCOPY
		PROJ: 21-036