

JUST LISTED

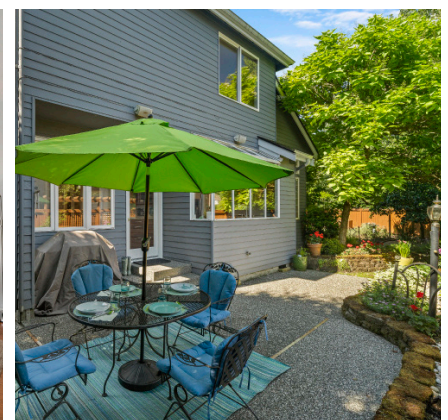
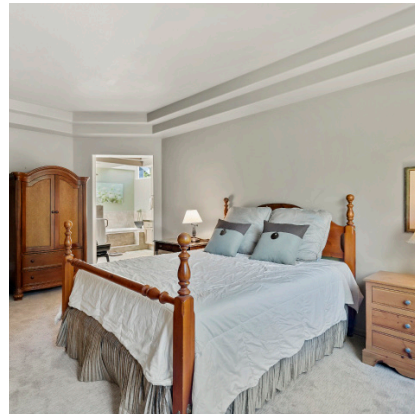
Offered at \$975,000



19710 89th Pl NE, Bothell, WA 98011

3 BED+DEN - 2.75 BATH - 2,580 SQFT - MLS 1798402

This beautifully maintained Tall Tree Park home features 3 bedrooms + den and sits on a corner lot in a cul-de-sac. Vaulted ceilings and Brazilian cherry hardwood floors greet you as you enter this light filled home. The large main bedroom features a walk-in closet and an updated bathroom with skylights, walk-in shower and deep soaking tub. The two guest bedrooms share a Jack-n-Jill bathroom for convenience. Additional updates include new siding and paint, new roof, new furnace, new carpet and updated kitchen. You will love the yard with two patios for entertaining with outdoor speakers or relax in your garden abundant with lavender, fruit and herbs. Just steps to Tall Tree Park which features a playground, paved path and green space. Close to schools, shopping, dining and all that downtown Bothell has to offer!



HOME FEATURES:

- Corner Lot
- Main Floor Office
- Vaulted Ceilings
- Beautifully Updated
- Brazilian Cherry Hardwood Floors
- Two Patios & Landscaped Yard
- Low HOA of \$30/Month
- Close to Neighborhood Schools & Parks



CONTACT AGENT:
Elizabeth Avery
425.444.0932

Information listed here is deemed reliable but NOT guaranteed.

Email Beth@ElizabethAvery.com
Web www.ElizabethAvery.com

RE/MAX
NORTHWEST
Work Hard. Be Nice.®



Elizabeth Avery
REALTOR®