

Outbuildings



5 Door building on the left

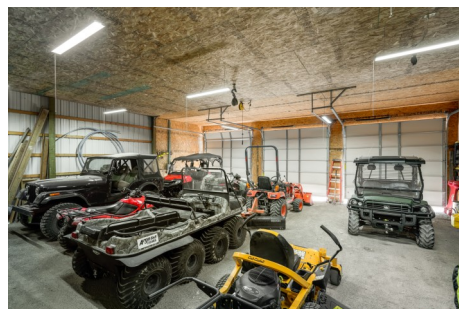
60'x36'

2 doors on the left include the shop:

- Heated, light, insulated
- Concrete floor with drain
- Plumbed for water
- Man door

3 doors on the right:

- Lighted
- Dirt/gravel floor
- Hooks for wild game



Red 2 door building on right

56'x30'

- Lights, man door, insulated
- 14' door height x 12' wide
- 12' door height x 10' wide
- Gravel/dirt floor

The Shootin' Shack

Southern boundary

Lights

Targets

RV hookups

Water

