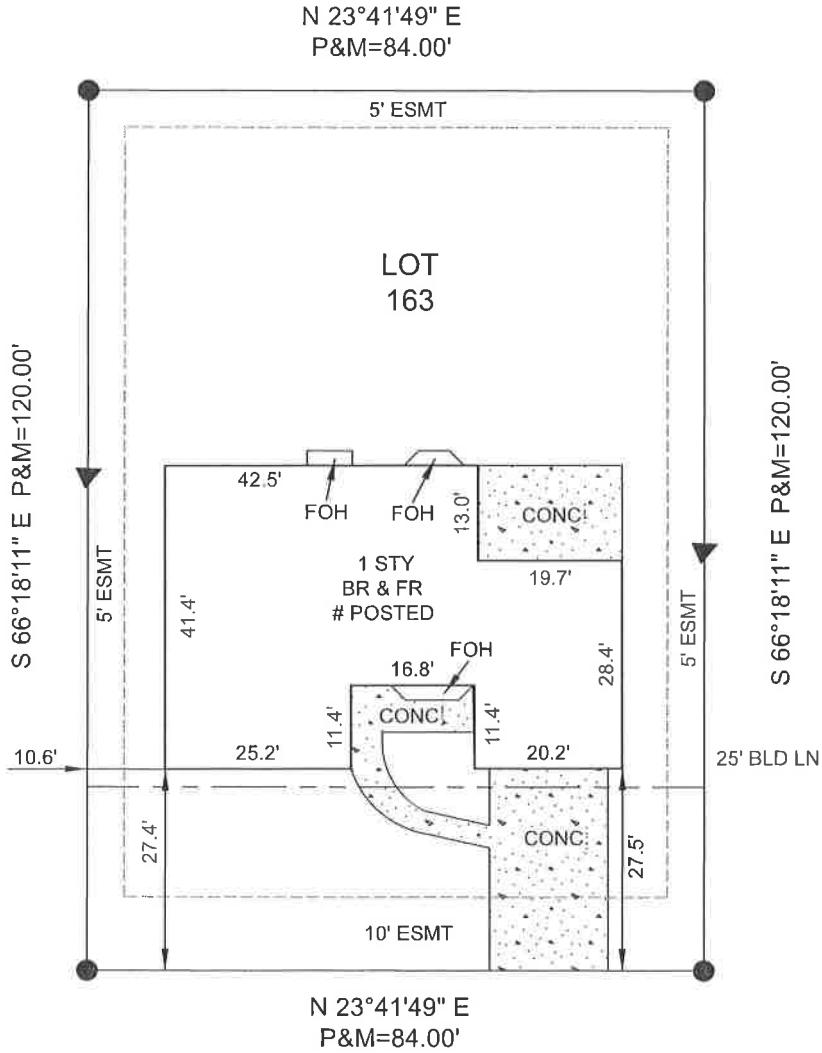
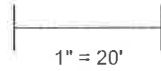


BOUNDARY SURVEY

LOT 163 OF CANVAS COVE PLAT FOUR PB 31 PG 221, ST CHARLES COUNTY, MO

- P PLATTED DISTANCE
- M MEASURED DISTANCE
- SET REBAR
- ▲ SET POINT ON LINE



#7222 PICASSO DRIVE (50' W)

SHEET 1 OF 2



PO BOX 278
COTTLEVILLE, MO 63338
PHONE: 636.922.1001
Corp # 2005000229
www.CardinalSurveying.com

JOB #1803124
FB 467:10
FIELD WORK BY: PND/AJZ
DRAWN BY: WJB/AEC
REVIEWED BY:
WILLIAM JACOB CLARK
LS# 2002014101

THIS IS TO CERTIFY THAT ON MARCH 12, 2018 A REQUEST BY TITLE PREMIER LLC WAS MADE FOR A BOUNDARY SURVEY AND TO LOCATE THE IMPROVEMENTS ON THE ABOVE NAMED TRACT AND THAT THE RESULTS ARE, TO THE BEST OF MY KNOWLEDGE, CORRECTLY REPRESENTED HEREON.

