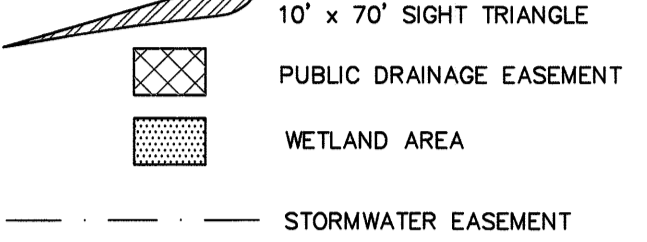
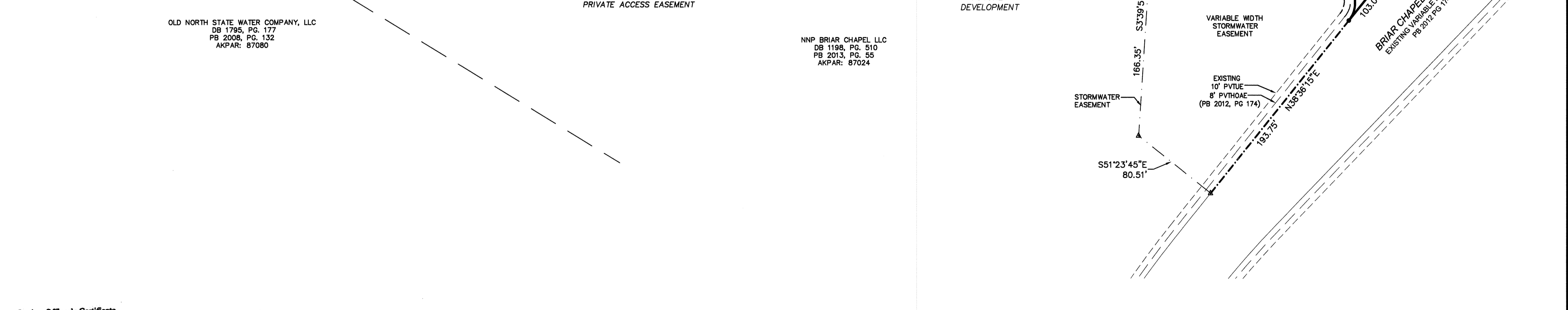
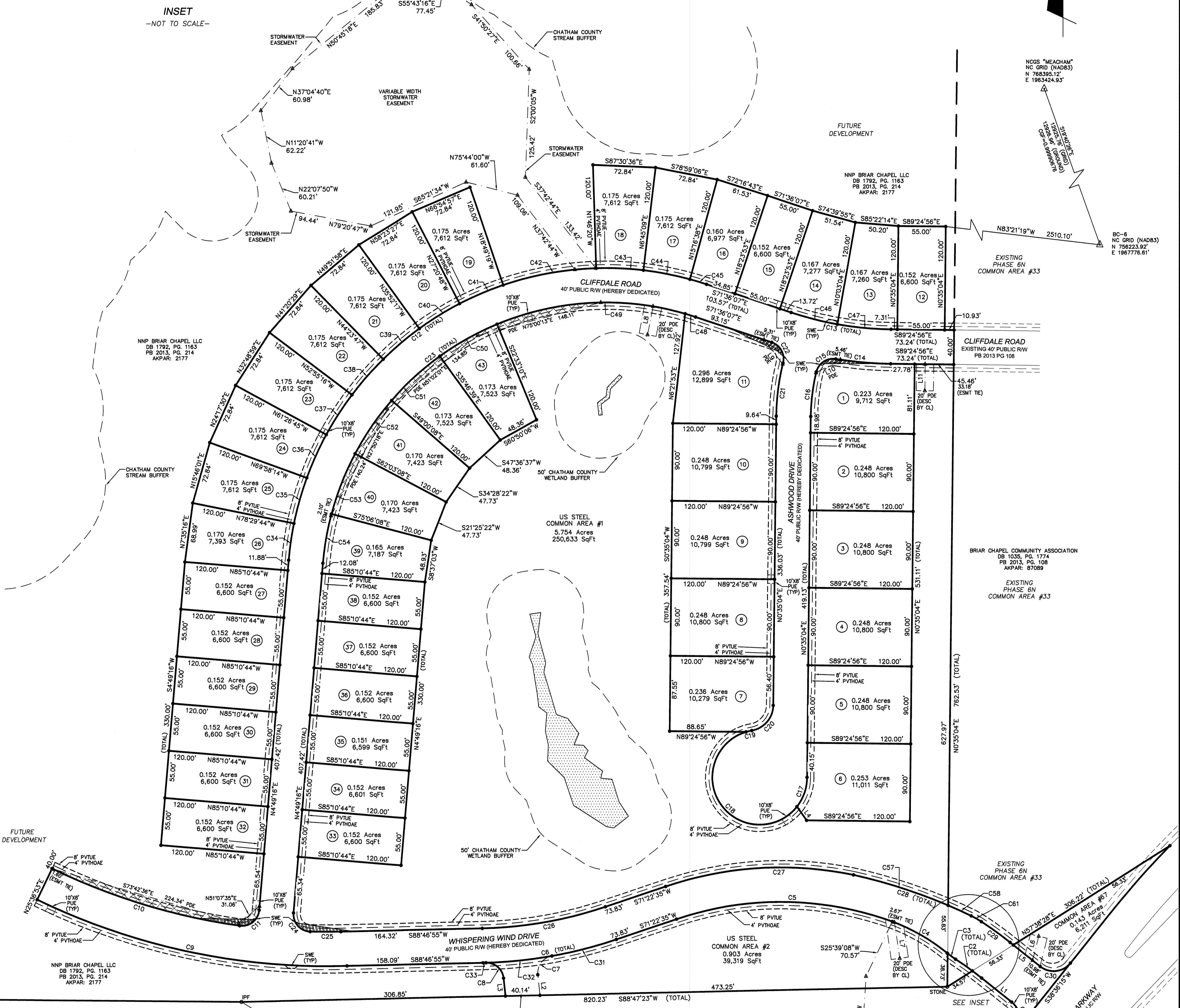
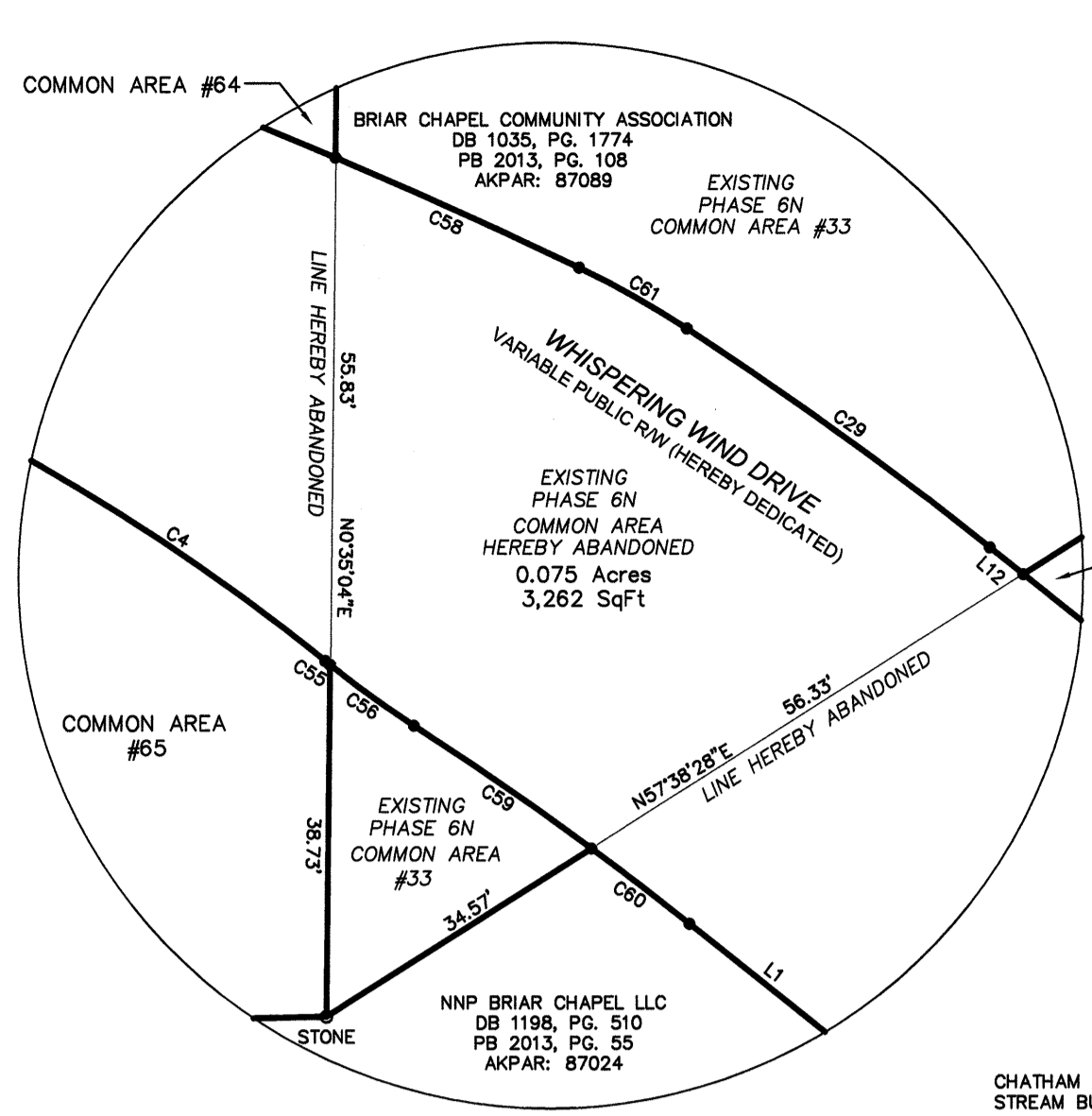


- LEGEND**
- IRON ROD SET (UNLESS OTHERWISE STATED)
 - EXISTING IRON ROD
 - △ EASEMENT POINT
 - (XXX) LOT NUMBER
 - EX. EXISTING
 - N/F. NOW OR FORMERLY
 - DB. DEED BOOK
 - PB. PLAT BOOK
 - PG. PAGE
 - PVTUE. PRIVATE UTILITY EASEMENT
 - PVHOAE. PRIVATE HOMEOWNERS ASSOCIATION EASEMENT
 - PUE. PUBLIC UTILITY EASEMENT
 - PDE. PUBLIC DRAINAGE EASEMENT
 - SDE. SIDEWALK EASEMENT
 - MAE. MAINTENANCE AND ACCESS EASEMENT
 - R/W. RIGHT-OF-WAY
 - sq. ft. SQUARE FEET
 - CP. COMPUTED POINT
 - DESC BY CL. DESCRIBED BY CENTERLINE



NC85 "MEACHAM"
NC GRID (NAD83)
N 7883295.12'
E 1983424.93'

BC-6
NC GRID (NAD83)
N 785223.92'
E 1987776.61'



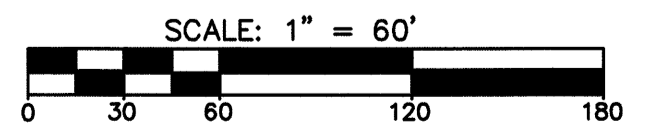
2016-190

Review Officer's Certificate
STATE OF NORTH CAROLINA, COUNTY OF CHATHAM

I, Andy W. Moore, Review Officer for Chatham County, certify that the map or plat to which this certification is affixed meets all statutory requirements for recording.

Andy W. Moore, Review Officer, 9-19-2016 Date

FILED Aug 19, 2016 11:54:04 am
PLAT SLIDE 02016 - 0190
INSTRUMENT 08138

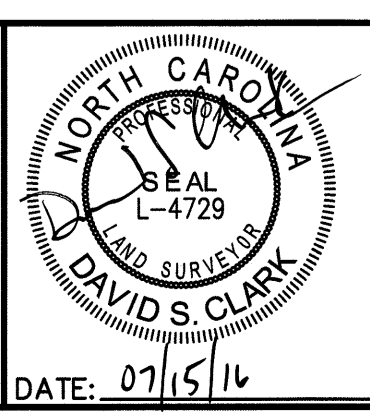


- SEE SHEET 1 FOR NOTES, CERTIFICATIONS, LINE AND CURVE TABLES

DATE	REVISION	INITIAL
07/15/2016	Modified "Additional Notes"	DSC

MCKIM & CREED

1730 Varsity Drive, Suite 500
Raleigh, North Carolina 27606
Phone: (919)233-8091, Fax: (919)233-8031
NC FIRM # F-1222
Internet Site: <http://www.mckimcreed.com>



FINAL SUBDIVISION, EASEMENT AND RIGHT-OF-WAY DEDICATION PLAT
OF
US STEEL PHASE 1A
FOR
NNP-BRIAR CHAPEL, LLC

DATE: APRIL 19, 2016 SCALE: 1" = 60'
BALDWIN TOWNSHIP CHATHAM COUNTY NORTH CAROLINA

PROJECT #: 2735-0130
PROJ. SVR: DSC
DRAWN BY: DSC
FIELD BK: DSC
COMP. FILE: W8101-27350130.dwg
SHEET #: 2 OF 2

DWG. #: R.1.4.1479

2016-190