

TRACT 1-E
VALLE VIEJO
FILED 7/24/2000
VOL. 3, FOLIO 1985-B

TRACT 2
VALLE VIEJO
12/03/2002, VOL. 3, FOLIO 2240-A

LOT E-1
LAS BRISAS
FD. 3/20/1995
VOL. 3, FOL. 1230B

LOT F-3-A-1-A
4.5398 Ac. gross
4.5398 Ac. net

TRACT B-3-A-1
5.8072 Ac. gross
5.7069 Ac. net

*Added to lot
Oct. 2017*

FND. #4 REBAR
PLS 8686 CAP

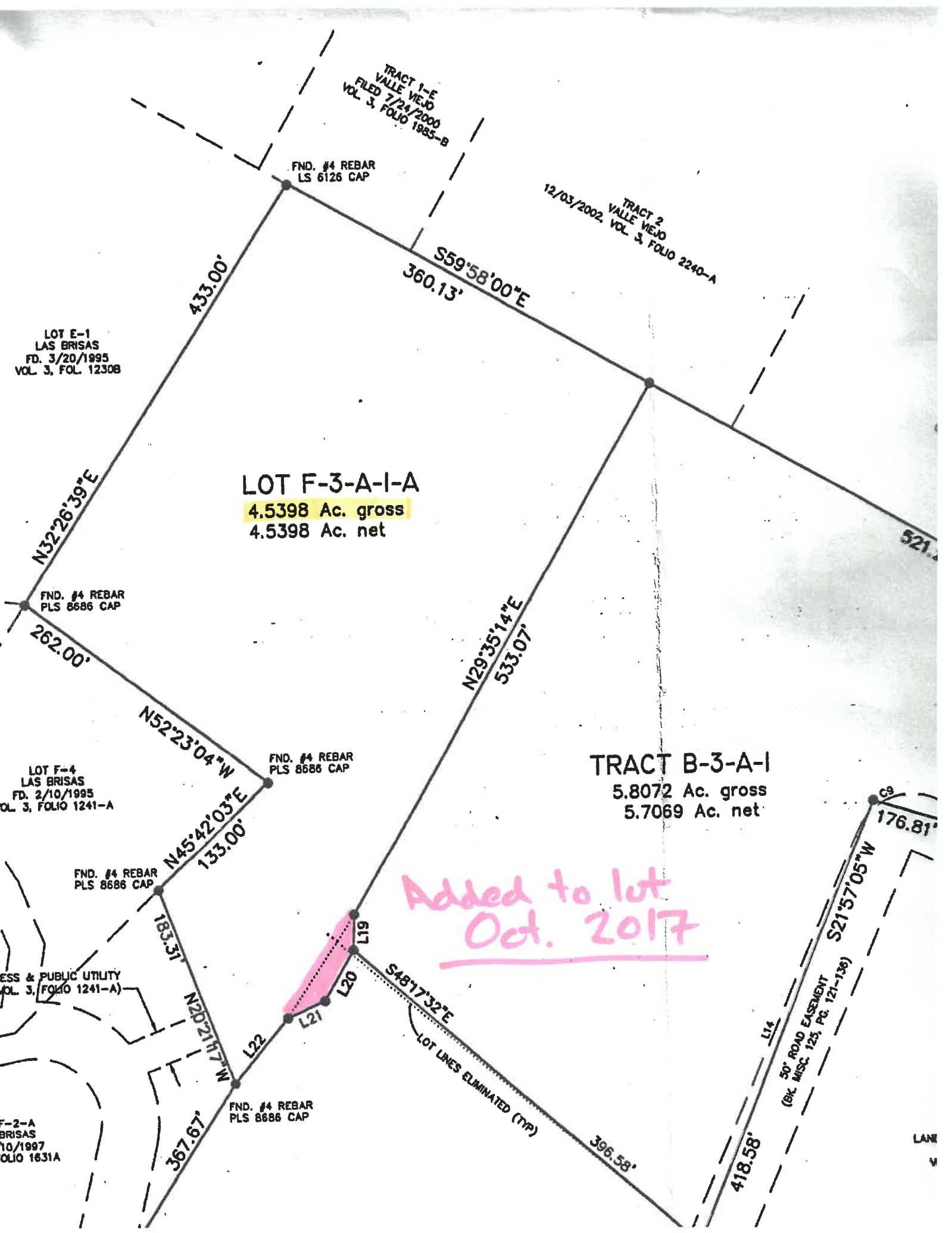
FND. #4 REBAR
PLS 8686 CAP

FND. #4 REBAR
PLS 8686 CAP

FND. #4 REBAR
PLS 8686 CAP

CESS & PUBLIC UTILITY
VOL. 3, FOLIO 1241-A

F-2-A
BRISAS
10/1997
FOLIO 1631A



433.00'

S59°58'00"E
360.13'

N32°26'39"E

262.00'

N52°23'04"W

N29°35'14"E
533.07'

N45°42'03"E
133.00'

183.31'

N20°21'17"W

367.67'

L19

L20

L21

L22

S48°17'32"E

LOT LINES ELIMINATED (TYP)

396.58'

418.58'

S21°57'05"W

176.81'

50' ROAD EASEMENT
(BY MISC. 125, PG. 121-136)

LANE