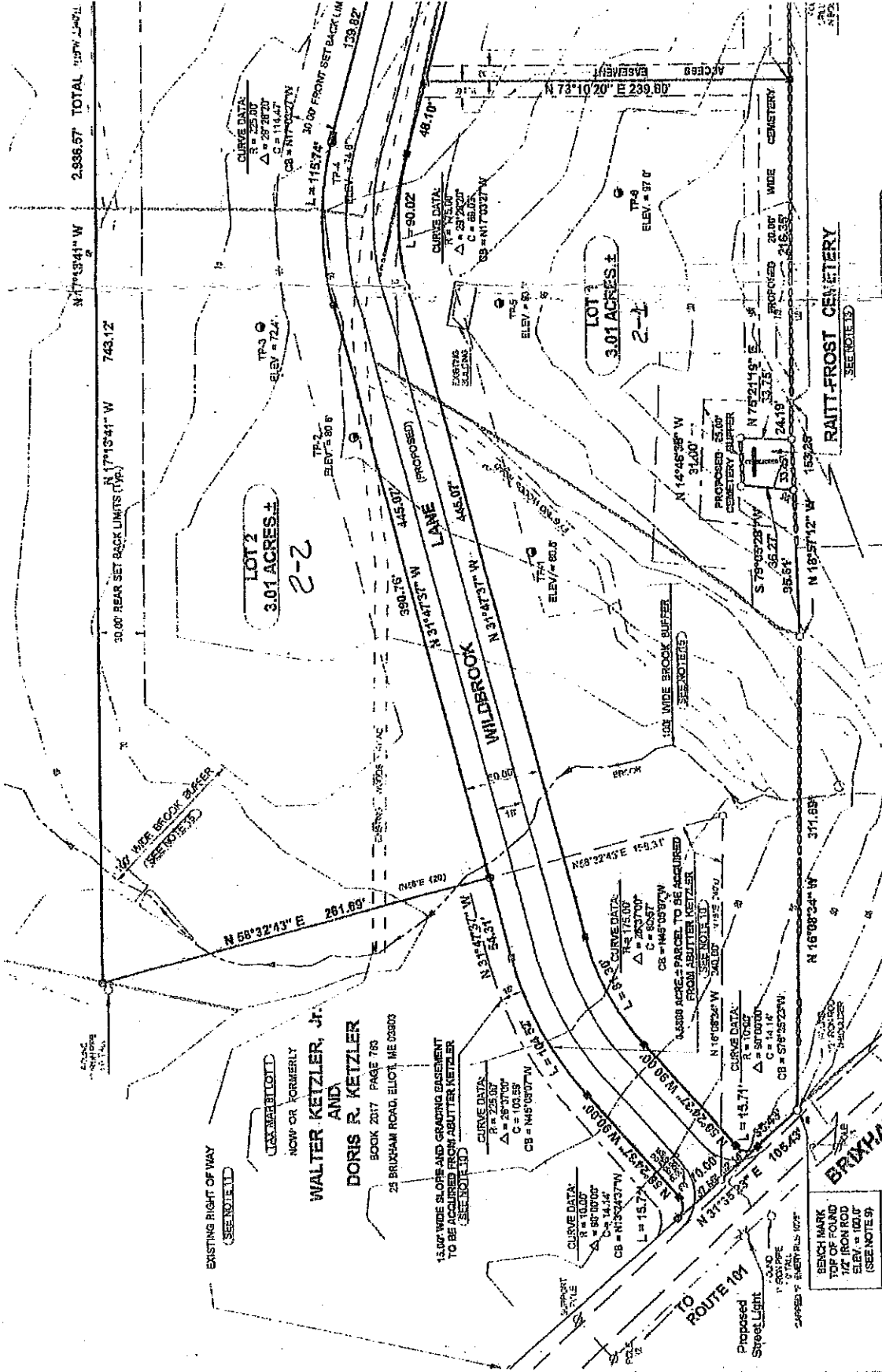


34°15'34.1" W
743.12
2,936.57' TOTAL (1574) 1574



EXISTING RIGHT OF WAY
(SEE NOTE 11)

TEX. MARI. E. LIOT
NOW OR FORMERLY
WALTER KETZLER, JR.
AND
DORIS R. KETZLER
BOOK 2017 PAGE 769
23 BRINGHAM ROAD, ELIOT, ME 05003

15.00' WIDE SLOPE AND GRADING EASEMENT
TO BE ACQUIRED FROM ABUTTER KETZLER
(SEE NOTE 11)

CURVE DATA:
R = 15.00
Δ = 57°32'31\"

CURVE DATA:
R = 10.00
Δ = 57°32'31\"

CURVE DATA:
R = 15.71
Δ = 57°32'31\"

CURVE DATA:
R = 10.00
Δ = 57°32'31\"

CURVE DATA:
R = 10.00
Δ = 57°32'31\"

CURVE DATA:
R = 10.00
Δ = 57°32'31\"

LOT 2
3.01 ACRES ±
2-2

LOT 1
3.01 ACRES ±
2-1

LOT 3
3.01 ACRES ±
2-1

30.00' REAR SET BACK LIMITS (TYP.)
N 7°13'41\" W
743.12
2,936.57' TOTAL (1574) 1574

WIDER BROOK BUFFER
(SEE NOTE 13)
WILDERBROOK LANE (PROPOSED)
N 31°47'31\" W
445.07'
N 31°47'31\" W
445.07'
N 16°08'24\" W
311.89'
N 16°08'24\" W
311.89'

PROPOSED STREET LIGHT
1\" CONCRETE PIPE
3\" SUPPLY & EMBLEM PL. 10\" TALL

RAITT-FROST CEMETERY
SEE NOTE 13
NOW OR FORMERLY
ROBIN L. BROOKS
ALAN D. BROOKS
579K-0688 PAGE 317
7 JOHNSON LANE, ELIOT, ME 05003

TEX. MARI. E. LIOT
NOW OR FORMERLY
RANDALL S. UNCAPHER
DEIRDRE O'D. UNCAPHER
BOOK 509 PAGE 154
19 CEDAR ROAD, ELIOT, ME 05003

PROPOSED 32.00' CEMETERY BUFFER
N 14°45'28\" W
314.00'
N 75°21'19\" E
33.75'
S 79°05'28\" W
56.27'
N 18°57'12\" W
159.28'

100' WIDE BROOK BUFFER
SEE NOTE 13
N 58°32'43\" E
261.69'
N 31°47'31\" W
54.31'

34.00' FRONT SET BACK LIM.
L = 115.74'
Δ = 115.74'
L = 90.02'
R = 15.00'
Δ = 57°32'31\"

TR-3
ELEV. = 72.4'
TR-2
ELEV. = 80.6'
TR-4
ELEV. = 81.8'

TR-3
ELEV. = 80.7'
TR-4
ELEV. = 81.8'

TR-5
ELEV. = 81.8'

TR-9
ELEV. = 97.0'

34°15'34.1\" W
743.12
2,936.57' TOTAL (1574) 1574

TO ROUTE 101

TO ROUTE 91

RAITT-FROST CEMETERY
SEE NOTE 13
NOW OR FORMERLY
ROBIN L. BROOKS
ALAN D. BROOKS
579K-0688 PAGE 317
7 JOHNSON LANE, ELIOT, ME 05003

TEX. MARI. E. LIOT
NOW OR FORMERLY
RANDALL S. UNCAPHER
DEIRDRE O'D. UNCAPHER
BOOK 509 PAGE 154
19 CEDAR ROAD, ELIOT, ME 05003