

Room	Area	Notes
Living Room	12' x 18'	Open to Dining Room
Dining Room	12' x 12'	Open to Living Room
Kitchen	10' x 12'	Open to Dining Room
Breakfast Room	8' x 10'	Open to Kitchen
Bedroom 1	12' x 12'	Master Suite
Bedroom 2	10' x 12'	Master Suite
Bedroom 3	10' x 12'	Master Suite
Bath	5' x 8'	Master Suite
Hall	4' x 6'	Master Suite
Garage	12' x 24'	2-Car Garage

**Notes**

1. All dimensions are in feet and inches.

2. All walls are 1/2" thick unless otherwise noted.

3. All doors are 36" wide unless otherwise noted.

4. All windows are 60" wide unless otherwise noted.

5. All windows are 60" high unless otherwise noted.

6. All windows are double-paneled unless otherwise noted.

7. All windows are operable unless otherwise noted.

8. All windows are to be finished with wood or vinyl unless otherwise noted.

9. All windows are to be finished with white paint unless otherwise noted.

10. All windows are to be finished with white trim unless otherwise noted.

**Notes**

1. All dimensions are in feet and inches.

2. All walls are 1/2" thick unless otherwise noted.

3. All doors are 36" wide unless otherwise noted.

4. All windows are 60" wide unless otherwise noted.

5. All windows are 60" high unless otherwise noted.

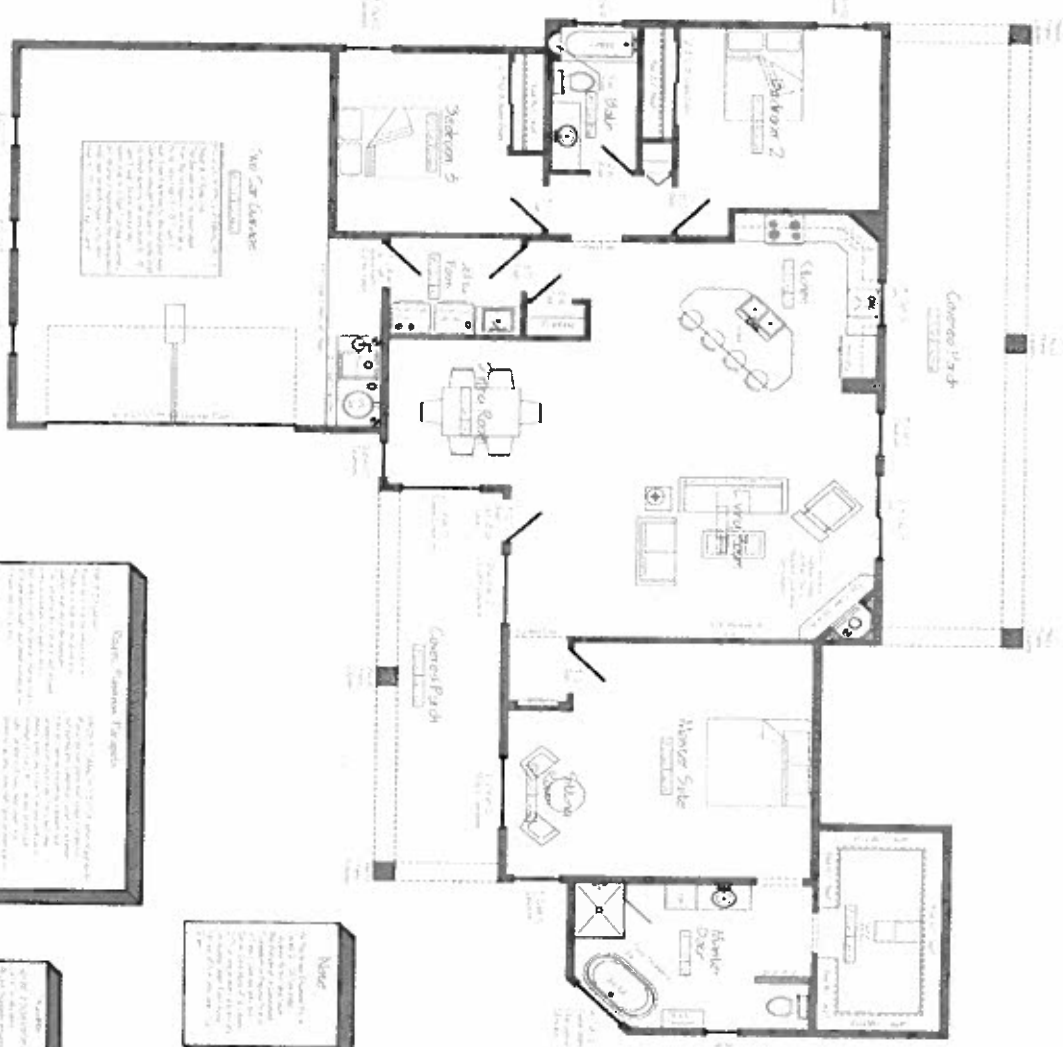
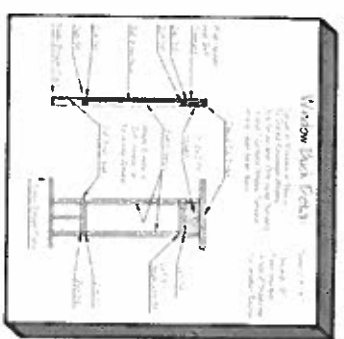
6. All windows are double-paneled unless otherwise noted.

7. All windows are operable unless otherwise noted.

8. All windows are to be finished with wood or vinyl unless otherwise noted.

9. All windows are to be finished with white paint unless otherwise noted.

10. All windows are to be finished with white trim unless otherwise noted.



**Notes**

1. All dimensions are in feet and inches.

2. All walls are 1/2" thick unless otherwise noted.

3. All doors are 36" wide unless otherwise noted.

4. All windows are 60" wide unless otherwise noted.

5. All windows are 60" high unless otherwise noted.

6. All windows are double-paneled unless otherwise noted.

7. All windows are operable unless otherwise noted.

8. All windows are to be finished with wood or vinyl unless otherwise noted.

9. All windows are to be finished with white paint unless otherwise noted.

10. All windows are to be finished with white trim unless otherwise noted.

**Notes**

1. All dimensions are in feet and inches.

2. All walls are 1/2" thick unless otherwise noted.

3. All doors are 36" wide unless otherwise noted.

4. All windows are 60" wide unless otherwise noted.

5. All windows are 60" high unless otherwise noted.

6. All windows are double-paneled unless otherwise noted.

7. All windows are operable unless otherwise noted.

8. All windows are to be finished with wood or vinyl unless otherwise noted.

9. All windows are to be finished with white paint unless otherwise noted.

10. All windows are to be finished with white trim unless otherwise noted.

**Notes**

1. All dimensions are in feet and inches.

2. All walls are 1/2" thick unless otherwise noted.

3. All doors are 36" wide unless otherwise noted.

4. All windows are 60" wide unless otherwise noted.

5. All windows are 60" high unless otherwise noted.

6. All windows are double-paneled unless otherwise noted.

7. All windows are operable unless otherwise noted.

8. All windows are to be finished with wood or vinyl unless otherwise noted.

9. All windows are to be finished with white paint unless otherwise noted.

10. All windows are to be finished with white trim unless otherwise noted.

**Notes**

1. All dimensions are in feet and inches.

2. All walls are 1/2" thick unless otherwise noted.

3. All doors are 36" wide unless otherwise noted.

4. All windows are 60" wide unless otherwise noted.

5. All windows are 60" high unless otherwise noted.

6. All windows are double-paneled unless otherwise noted.

7. All windows are operable unless otherwise noted.

8. All windows are to be finished with wood or vinyl unless otherwise noted.

9. All windows are to be finished with white paint unless otherwise noted.

10. All windows are to be finished with white trim unless otherwise noted.

**Notes**

1. All dimensions are in feet and inches.

2. All walls are 1/2" thick unless otherwise noted.

3. All doors are 36" wide unless otherwise noted.

4. All windows are 60" wide unless otherwise noted.

5. All windows are 60" high unless otherwise noted.

6. All windows are double-paneled unless otherwise noted.

7. All windows are operable unless otherwise noted.

8. All windows are to be finished with wood or vinyl unless otherwise noted.

9. All windows are to be finished with white paint unless otherwise noted.

10. All windows are to be finished with white trim unless otherwise noted.

**Notes**

1. All dimensions are in feet and inches.

2. All walls are 1/2" thick unless otherwise noted.

3. All doors are 36" wide unless otherwise noted.

4. All windows are 60" wide unless otherwise noted.

5. All windows are 60" high unless otherwise noted.

6. All windows are double-paneled unless otherwise noted.

7. All windows are operable unless otherwise noted.

8. All windows are to be finished with wood or vinyl unless otherwise noted.

9. All windows are to be finished with white paint unless otherwise noted.

10. All windows are to be finished with white trim unless otherwise noted.

**Notes**

1. All dimensions are in feet and inches.

2. All walls are 1/2" thick unless otherwise noted.

3. All doors are 36" wide unless otherwise noted.

4. All windows are 60" wide unless otherwise noted.

5. All windows are 60" high unless otherwise noted.

6. All windows are double-paneled unless otherwise noted.

7. All windows are operable unless otherwise noted.

8. All windows are to be finished with wood or vinyl unless otherwise noted.

9. All windows are to be finished with white paint unless otherwise noted.

10. All windows are to be finished with white trim unless otherwise noted.

**Notes**

1. All dimensions are in feet and inches.

2. All walls are 1/2" thick unless otherwise noted.

3. All doors are 36" wide unless otherwise noted.

4. All windows are 60" wide unless otherwise noted.

5. All windows are 60" high unless otherwise noted.

6. All windows are double-paneled unless otherwise noted.

7. All windows are operable unless otherwise noted.

8. All windows are to be finished with wood or vinyl unless otherwise noted.

9. All windows are to be finished with white paint unless otherwise noted.

10. All windows are to be finished with white trim unless otherwise noted.

# Floor Plan

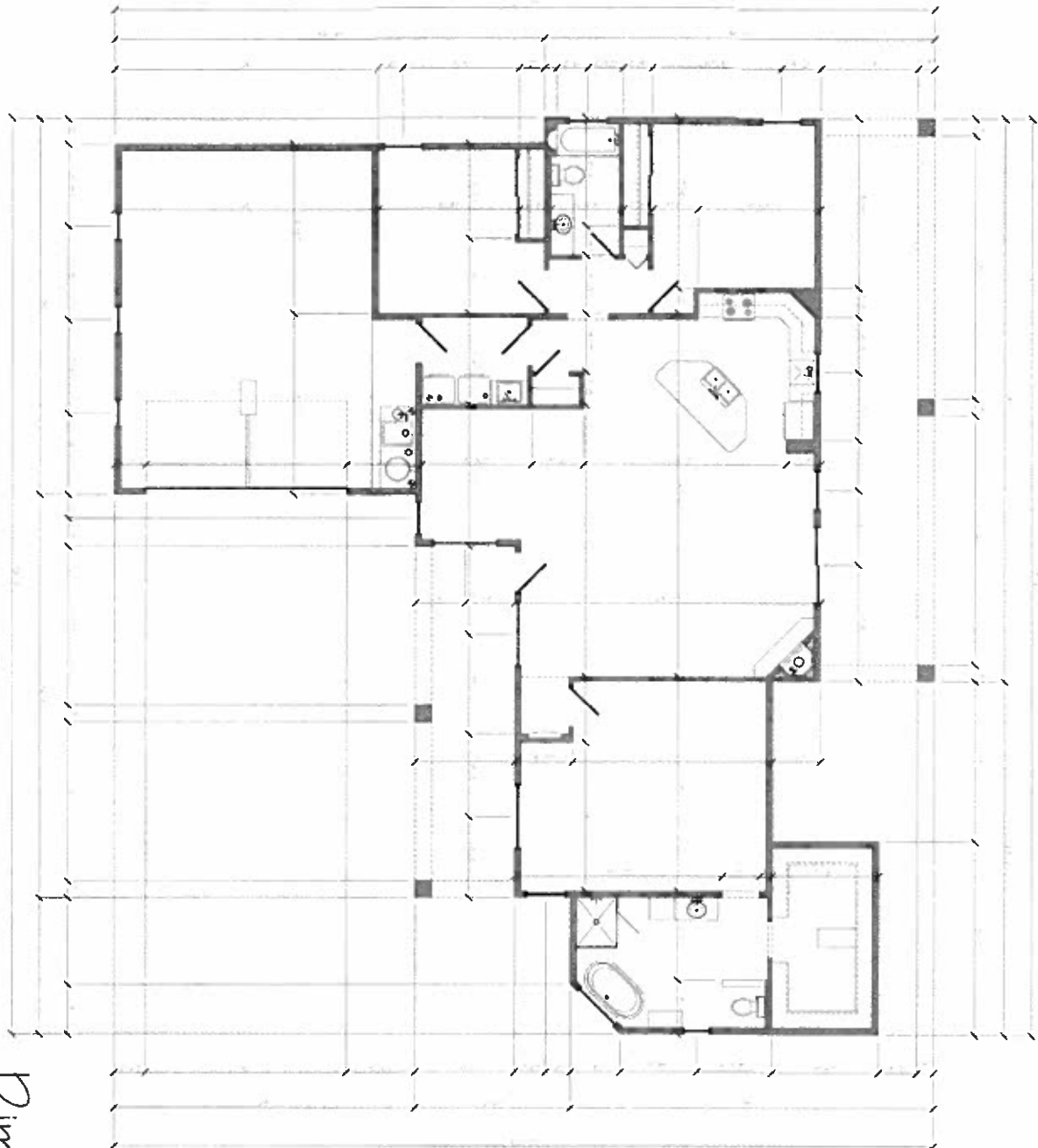
Scale: 1/4" = 1'

Sheet 2

Balli Custom Home  
Albuquerque New Mexico

April 27, 2016  
Floor Plan

Ron Montoya Custom Designs  
Residential Design and Drafting Services P.O. Box 64117  
8724 Alameda Park Drive NE, Suite G Albuquerque  
(505) 825-6474 Cell (505) 825-6177



# Dimensions

Sheet 1 of 1

© 2016 Ron Montoya Custom Designs  
 8174 Alameda Park Drive NE, Suite G Albuquerque  
 NM 87113

	Sheet 1 of 1
--	-----------------

Balli Custom Home  
 Albuquerque New Mexico

April 27, 2016  
 Dimensions

Ron Montoya Custom Designs  
 Residential Design and Drafting Services 1-877-648-7  
 8174 Alameda Park Drive NE, Suite G Albuquerque  
 (505) 875-6414 Cell (505) 875-6777